

**TOYOTA**  
**HYBRID**



THE FASTEST WAY TO A  
SUSTAINABLE FUTURE

PRIUS



**UNMATCHED WARRANTY\***  
3 years / 1,00,000kms  
\*Conditions Apply

You can Talk to Toyota at 1800-425-0001 (BSNL/MNTL Toll Free No.) or +91-80-66293001 (Direct No.) or visit [www.toyotabharat.com](http://www.toyotabharat.com)  
Note: Vehicles picture and specifications detailed in this brochure may vary between models and equipments. Addition of extra features may change figures in this chart. Toyota Kirloskar Motor Pvt. Ltd. reserves the right to alter any details of specifications and equipment without notice. Actual colour of vehicle body & upholstery might differ slightly from the images depicted in this brochure. Features are variant specific.



An aerial photograph showing a narrow, light-colored road that curves through a vast, dense forest of green trees. The forest is thick and covers the majority of the frame, with the road acting as a central element that leads the eye into the distance. The lighting is bright, suggesting a sunny day, and the colors are vibrant greens and browns.

## PAVING THE ROADS TO A BETTER, FASTER AND THRILLING TOMORROW.

Toyota has always been the leader in the production of hybrid electric vehicles. Having sold more than 11 million hybrid electric vehicles worldwide, Toyota's Hybrid Synergy Drive® is undeniably the world's leading hybrid electric technology.

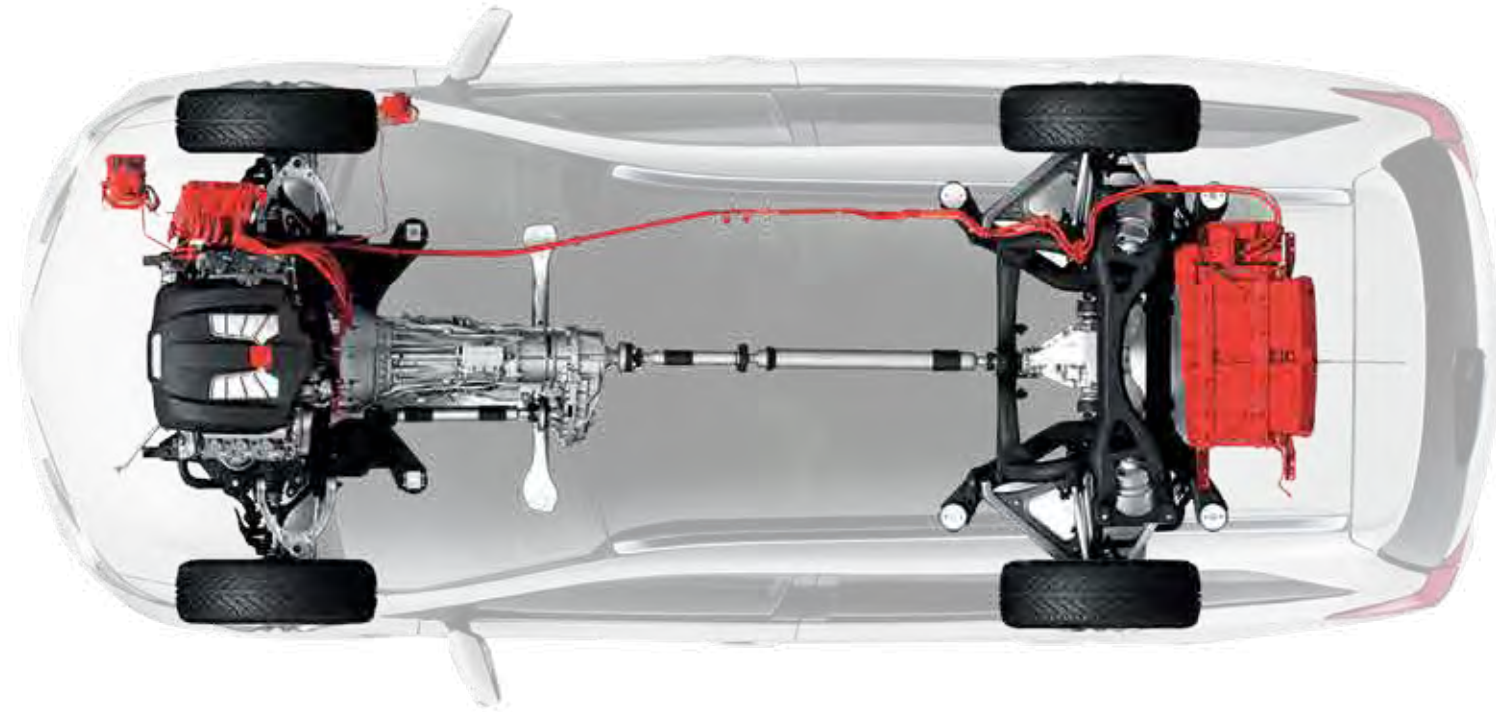
This smart technology blends the best of petrol engines and electric motors for maximum efficiency & minimal emission. Being the pioneers of hybrid electric technology, Toyota plans to lead the hybrid electric revolution into the future.

**TOYOTA** **HYBRID**



## POWER

Hybrid electric vehicles are known to be more powerful than their conventional counterparts. The engine switches to different power sources for different terrains to give you the optimum output.



## PERFORMANCE

Hybrid electric vehicles deliver superior performance as expected from luxury and performance vehicles. Take the Prius for example, powered by a 1.8 litre engine it delivers superior torque to make driving a pleasure.

## EFFICIENCY

By effortlessly switching between engine and motor, hybrid electric vehicles ensure maximum efficiency per mile. It doesn't just enhance fuel efficiency, it also ensures that your car's engine has a healthy and long life.

## CONSERVATION

The engine switches to electric motor even when idling to minimise CO<sub>2</sub> emissions. The hybrid electric technology is the fastest way to move into a sustainable future.

The visual shown here is for representation only. The actual mechanism may vary depending on models and regions.



# DUAL POWER TO MAXIMISE A GREAT DRIVING EXPERIENCE

With two power sources working in efficient tandem, Toyota hybrid electric vehicles ensure a superlative driving experience. Irrespective of the weather and driving conditions, the hybrid electric system works intelligently to switch between these sources.

## WHAT A TRUE HYBRID DOES AND DOES NOT?



### HYBRID ELECTRIC VEHICLES ARE MORE POWERFUL THAN CONVENTIONAL CARS

Hybrid Synergy Drive® senses when the engine requires more power and turns on the electric motor for support. Hence, the wheels get power from two sources simultaneously which is far more than what a petrol engine alone would deliver.



### LESS CO<sub>2</sub> EMISSIONS MEAN CONTRIBUTING RESPONSIBLY TO THE ENVIRONMENT

Return the love nature gives you while driving in ECO mode. Powered by the most advanced and eco-friendly technology, Toyota hybrid electric vehicles generate lesser CO<sub>2</sub> emissions compared to other conventional cars. In EV mode, the car runs only on an electric motor.



### EXTREMELY SAFE TO DRIVE, EVEN IN MONSOONS

The battery pack and high voltage electric circuits in Toyota hybrid electric vehicles are completely sealed and protected against accidental contact with moisture. Driving a hybrid electric vehicle is as safe as driving any other car, even in the rain.



### COST OF MAINTENANCE AS MUCH AS ANY OTHER CAR

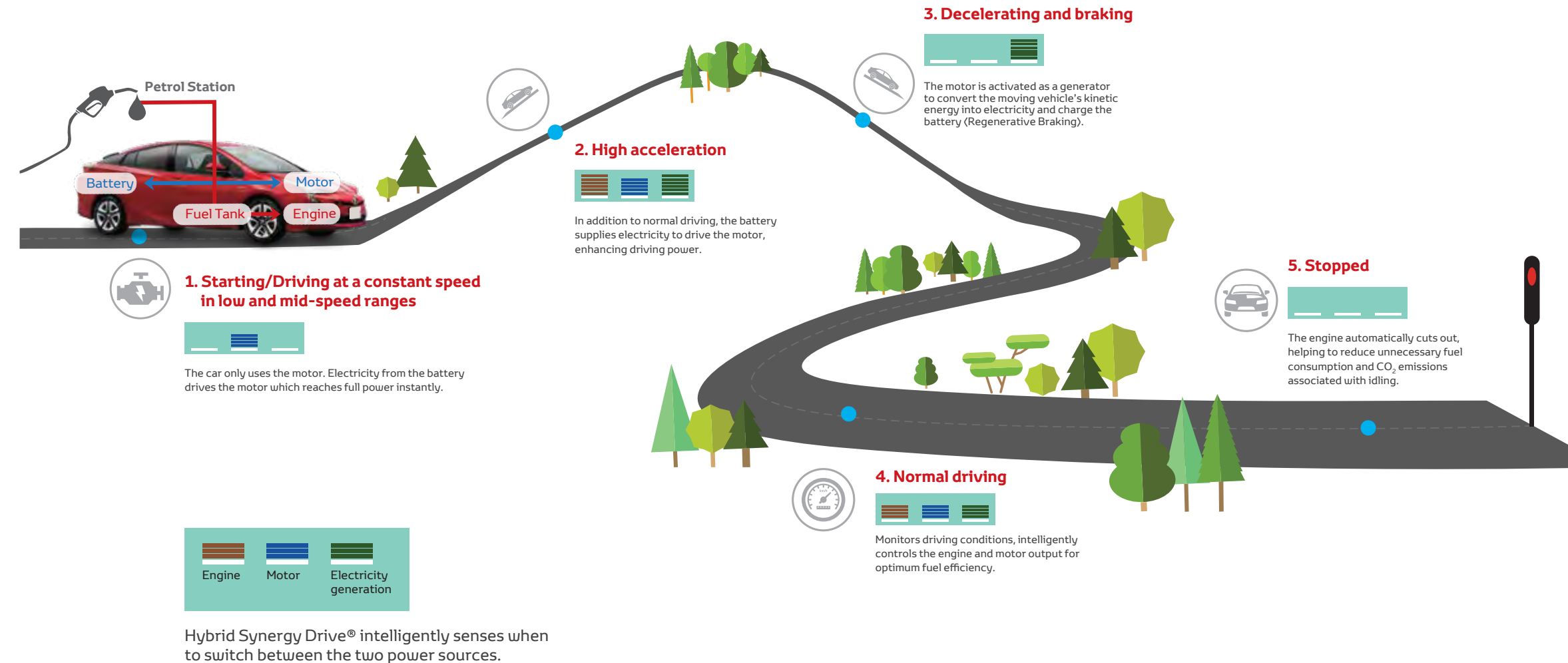
The battery pack and electric motor assembly in Toyota hybrid electric vehicles do not require frequent service and so are quite convenient to maintain. The cost of maintaining a hybrid electric vehicle is almost the same as any other car, or even lesser.



### NO NEED TO PLUG IN FOR CHARGING

Toyota hybrid electric vehicles automatically charge their batteries while driving using Regenerative Braking technology. The heat energy generated as friction during braking is used to charge the battery, which in turn powers the electric motor. This ensures that plugging in for charging is never required.

## HOW A HYBRID ELECTRIC VEHICLE WORKS





LEADING INTO A FUTURE WITH PASSION,  
POISE AND PERFORMANCE.



Featured Colour: Emotional Red

# PRIUS

THE PIONEER, THE LEADER, THE CULT, MOST  
IMPORTANTLY A SHEER JOY TO DRIVE.

When you are driving a Prius, you find yourself at the gates of the future. The Hybrid Synergy Drive® (HSD) efficiently recycles energy, producing maximum output with minimum emissions. Backed by a host of features like the double-wishbone rear suspension, 7 inch DLX with DVD display audio, seat heater, tilt and telescopic steering and many others, this is a delight to drive. The edgy styling and sporty lines ensure that the leader turns heads wherever it treads.





Featured Colour: Dark Blue Mica Metallic



- 1 DRIVE MODE SWITCH**  
Switch between Normal, Eco, Power and EV modes to suit your driving style.
- 2 CONTROLS ON STEERING WHEEL**  
Multi-dimensional switches at the steering wheel mean you never have to take your hands off the steering wheel.
- 3 COLOUR HEAD-UP DISPLAY (HUD)**  
The available colour Head-Up Display (HUD) uses aircraft-inspired technology to project important information right on the windshield. This full-colour display can show your speed, hybrid electric system indicator info and give turn-by-turn directions.



# PRIUS - SPECIFICATIONS

| DIMENSIONS & WEIGHT                                       |  |
|---|--|
| Overall (L x W x H)                                       | 4.540 m X 1.760 m X 1.490 m                    |
| Wheel Base  | 2.700 m  |
| Min. Turning Radius                                       | 5.1 m  |
| Fuel Tank Capacity  | 43 ℓ   |
| Seating Capacity  | 5-Seater                                       |
| Gross Vehicle Weight                                      | 1790 kg  |
| ENGINE  |  |
| Type  | 2ZR-FXE, 4-Cylinder, In-Line                   |
| Displacement  | 1798 cm³ (cc)                                  |
| Fuel Type   | Petrol (Hybrid)                                |
| Max. Output   | 72 kW (97.89 PS) @ 5200 rpm                    |
| Max. Torque   | 142 Nm (14.48 kg-m) @ 3600 rpm                 |
| Emission  | Bharat Stage-IV                                |
| MOTOR GENERATOR   |  |
| Type  | Permanent Magnet Synchronous Motor             |
| Max. Output   | 53 kW (72 PS)                                  |
| Max. Torque   | 163 Nm (16.62 kg-m)                            |
| HYBRID ELECTRIC BATTERY                                   |  |
| Type  | Nickel Metal Hydride                           |
| Voltage (Nominal)   | 201.6 V  |
| Number of Modules   | 28   |
| Battery Capacity  | 6.5 Ah   |
| HYBRID ELECTRIC SYSTEM                                    |  |
| Total System Output                                       | 90 kW (122PS)                                  |
| Drive Mode  | Drive (Normal, Eco, Power) & EV mode           |
| CHASSIS & TRANSMISSION                                    |  |
| Suspension Front / Rear                                   | Front: MacPherson Strut; Rear: Double Wishbone |
| Stabilizer Bar  | Front & Rear: Torsion Bar                      |
| Brake Front / Rear  | Ventilated Disc / Solid Disc                   |
| Tyres   | 195 / 65 R15                                   |
| Transmission  | CVT  |
| Drive Type  | Front  |
| EXTERIOR FEATURES   |  |
|   | Grade (Z8)                                     |
| LED Headlamps   | ✓  |
| Front Fog Lamp with Daytime Running Light                 | ✓  |
| 195/65 R15 Alloy Wheel                                    | ✓  |
| Outside Door Handles                                      | Color  |
| INTERIOR FEATURES   |  |
|   | Grade (Z8)                                     |
| Leather / Fabric Mid Seats                                | With Leather                                   |
| Inside Chrome Door Handles                                | ✓  |
| Illuminated Entry (Room Lamp + Personal Lamp + Step Lamp) | ✓  |
| Key Remind / Light Remind / Speed Warning                 | ✓  |
| 12 V DC Power Outlet (Front + Rear)                       | ✓  |

| INTERIOR FEATURES  |  | Grade (Z8)                                     |
|--|--|--|
| Shift Position Indicator   |  | ✓  |
| Eco Driving Indicator (Eco-Lamp & HV-Indicator)  |  | ✓  |
| Assist Grip / Coat Hook / Door Scuff Plate   |  | ✓  |
| Front Personal Lamp + Door Courtesy Lamp (Front)   |  | ✓  |
| Tilt & Telescopic Steering   |  | ✓  |
| COMFORT & CONVENIENCE  |  | Grade (Z8)                                     |
| Touchscreen Display Audio with DVD, AM/FM, CD, MP3, USB, Aux-in, Bluetooth               |  | ✓  |
| 10 No. JBL Speakers  |  | ✓  |
| Pitch and Bounce Control   |  | ✓  |
| Headlamps with Auto Levelling  |  | ✓  |
| Follow Me Home Headlamp  |  | ✓  |
| Seat Heater (Driver + Passenger)   |  | ✓  |
| Leather Seats & Steering Wheel   |  | ✓  |
| Controls on Steering Wheel - Operation (MID + Audio + Trip + Telephone)                  |  | ✓  |
| Back Monitor   |  | ✓  |
| Cruise Control   |  | ✓  |
| Driver - 6 Way / Passenger - 4 Way with Driver Side Power Lumbar                         |  | ✓  |
| Head-Up Display  |  | ✓  |
| Wireless Charger   |  | ✓  |
| Rain Sensing Wipers  |  | ✓  |
| Dual Auto AC   |  | ✓  |
| Fin Antenna  |  | ✓  |
| Outside Rear View Mirror with Electric Adjust + Retract + Turn Signal Indicator + Heater |  | ✓  |
| Auto Dimming Inside Rear View Mirror   |  | ✓  |
| Smart Entry (Driver + Passenger + Back Door) with Push Start System                      |  | ✓  |
| SAFETY & SECURITY  |  | Grade (Z8)                                     |
| 7 Airbags* (Driver + Passenger + Front Side + Curtain + Driver Knee Airbag)              |  | ✓  |
| Seat Belt Warning (Driver, Passenger & Rear)   |  | ✓  |
| ABS + BA + EBD + VSC + Traction Control  |  | ✓  |
| Immobilizer  |  | ✓  |
| Front and Rear Seat Belt   |  | 3 Point ELR with Pre-tensioner & Force Limiter |
| Rear Seat Child Restraint System   |  | ISOFIX-2 with Rear Tether Anchor               |
| Rear Fog Lamp  |  | ✓  |

\*For more details on the functioning of Airbags please refer to the owner's manual

## AVAILABLE COLOURS



Emotional Red



Super White II



White Pearl  
Crystal Shine



Silver Metallic



Grey Metallic



Attitude Black Mica



Dark Blue  
Mica Metallic