

ŠKODA KUSHAQ



ŠKODA
SIMPLY CLEVER



INTRODUCTION	04
EXTERIOR DESIGN	06
LIGHT DESIGN	12
INTERIOR DESIGN	18
PERFORMANCE	24
SAFETY	30
INFOTAINMENT AND CONNECTIVITY	36
SIMPLY CLEVER	42
STORAGE	48
COMFORT AND CONVENIENCE	52
TECHNICAL SPECIFICATIONS	60

CHOOSE WHAT REALLY MATTERS.

Life is made more memorable when we make the choices that really matter. With clever features complemented by a stunning presence, the ŠKODA KUSHAQ elevates every journey with grace. Here is a car that seamlessly fits into the culture that makes India and embraces each road as its own. So, make the choice that really matters with the new ŠKODA KUSHAQ.



EXTERIOR DESIGN



A SIGHT TO BEHOLD.

Keeping up with the smart, the new ŠKODA KUSHAQ is a perfect blend of design and function. A vision from afar and up close, the many features of this car add to its functionality, without compromising on luxury. The reasons to marvel at this car are plenty.

FRONT VIEW

The ŠKODA KUSHAQ with the ŠKODA signature grille and chrome surround evokes feelings of strength and safety. The front is dominated by sharply cut headlamps and fog lamps. The chrome highlights on the front bumper air intake as well as the silver armoured front diffuser enhance the car's form.



REAR VIEW

With the unmistakable ŠKODA lettering at the rear, the car proudly carries its heritage. The distinctive wedged-shaped tail lights with the familiar C-shaped illumination, reference the Czech crystal glass-making tradition. The dynamic trunk spoiler and the chrome strip on the trunk enhance the car's form. The reflectors are recessed in the rear bumper to protect them from damage. The ŠKODA KUSHAQ also features a robust protective cover and the silver armoured rear diffuser, adding to its robustness.

SIDE VIEW

While the angular wheel arches, silver side armoured cladding and protective sill covers accentuate the SUV's character, ŠKODA's Piano Black fender garnish with chrome outline and the window chrome garnish take it a notch above. The continuous play of light and shadow defined by the ŠKODA design language puts emotion and grace into the ŠKODA KUSHAQ's appearance.



TOP VIEW

As the electric sunroof allows you to create a large open space above the seats, the Glossy Black shark fin antenna and silver roof rails with a load capacity of 50 kg elevate the exterior design. Giving you the chance to enjoy new vistas and journeys even more.

LIGHT DESIGN



PATH TO LUMINESCENCE.

An extension of its impeccable design, the ŠKODA KUSHAQ is equipped with a complete LED system for your seamless travels.

**ŠKODA CRYSTALLINE LED
HEADLAMPS WITH DAY TIME
RUNNING LIGHTS**

The LED headlamps offer high performance with high energy efficiency. The main headlamps boast an eye-catching integrated strip of LED day time running lights. Under poor light conditions, the fog lamps with their static cornering function come into their own, ensuring maximum safety.





ŠKODA CRYSTALLINE SPLIT LED TAIL LAMPS

The rear lights have LED technology as standard, while the crystalline design refers to Czech cubism and the country's glass-making tradition. Their sharp lines make the vehicle stand out confidently.



INTERIOR DESIGN

A NOTCH ABOVE.

The feeling of comfort envelopes you as soon as you step into the ŠKODA KUSHAQ. Clean lines of the dashboard, infotainment system placed in the driver's direct view, chrome details and ambient lighting add to the spacious design of ŠKODA KUSHAQ's interiors.



DASHBOARD

The new ŠKODA KUSHAQ dashboard with its chrome elements brings a unique style to the interior. Piano Black Luxe interiors coupled with premium honeycomb decor and ambient lighting. A classy chrome trim on air conditioning vents, AC ducts and the chrome door handles enhance the look and bring a neat uniformity to the design.



DESIGN AND FUNCTIONALITY

The car features a newly designed multifunctional 2-spoke steering wheel with chrome scrollers which allow you to control the radio, phone, and audio. The multifunction smart display instrument cluster behind the steering wheel also adds to the design of the car.



COMFORT AND SPACE

ŠKODA's craftsmanship is proudly presented inside. The front features ventilated black leather seats with perforated grey design while the rear has black leatherette seats with perforated grey design. Surrounded by high quality materials, you are sure to enjoy the drive, no matter where you sit. The exceptionally spacious interior offers generous legroom and headroom for everyone.



SCUFF PLATES WITH KUSHAQ INSCRIPTION

The decorative scuff plates enhance the aesthetics of the ŠKODA KUSHAQ. They also protect the paintwork around the scuff plate from dirt.



AMBIENT LIGHT PACKAGE

Available in white colour, the ambient lighting helps dial up the snugness.



THE POWER TO OUTPERFORM.

Built to power through without compromising on performance, the new ŠKODA KUSHAQ is a powerhouse on the inside and the outside.

PERFORMANCE

ENGINE

The ŠKODA KUSHAQ comes with 2 engine variants - 1.0 TSI and 1.5 TSI. The engines are modern, dynamic, and efficient.



1.0 TSI ENGINE

The 1.0 TSI engine, with 85 kW power and 178 Nm torque, is powerful yet efficient. The engine is available in both manual and automatic.



1.5 TSI ENGINE*

The ŠKODA KUSHAQ's 1.5 TSI DSG engine with ACT - Active Cylinder Technology, the first in segment, churns out 110 kW power. Over 250 Nm torque ensures great acceleration and an enjoyable drive. It is available in both manual and automatic.

*This is preliminary information



MANUAL TRANSMISSION

The car is offered with a 6-speed manual transmission.



AUTOMATIC TRANSMISSION

Depending on the engine, the car can be equipped with 6-speed automatic and 7-speed DSG transmission.

SAFETY



HAS YOUR BACK.

The new ŠKODA KUSHAQ is equipped to keep the safety of every passenger at the forefront with 6 airbags, Electronic Stability Control system and multiple safety features.

SAFE HAPPENS

In extreme situations, where the driver cannot actively influence the outcome, the car's passive elements take over – like airbags.

CURTAIN AIRBAGS

These two airbags protect the pelvis and chest of the driver and other passengers in the event of a side collision.



FRONT SIDE AIRBAGS

These airbags protect the pelvis and chest of the driver and passengers in case of a side collision.

DRIVER & PASSENGER FRONT AIRBAGS

While the driver airbag is enclosed in the steering wheel, the passenger airbag is located in the dashboard. If needed, this can be deactivated when a child seat is installed on the front seat.



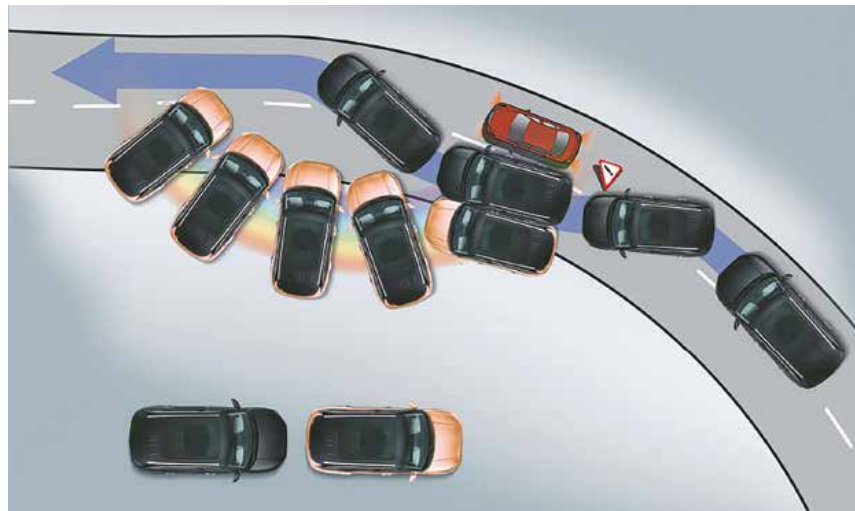
HILL HOLD CONTROL

HHC allows a safe start uphill without using the parking brake.



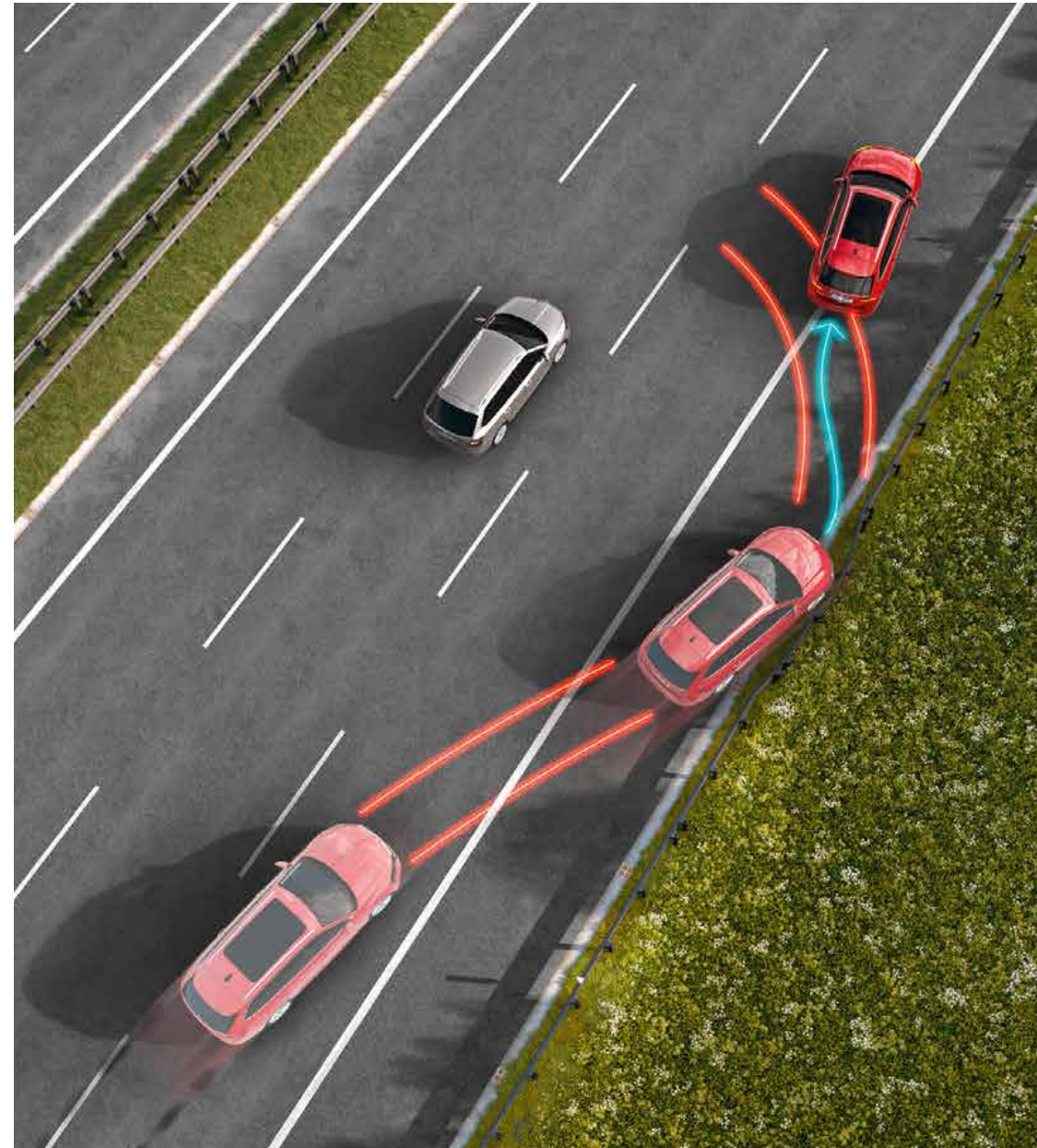
TYRE PRESSURE MONITORING SYSTEM

This feature detects and alerts the driver to a drop in pressure below the critical threshold in any wheel/tyre.



ELECTRONIC STABILITY CONTROL (AVAILABLE ACROSS ALL VARIANTS)

ESC helps to maintain directional stability and tyre traction during understeer and oversteer.



MULTI-COLLISION BRAKE

In case of an accident, the Multi-Collision Brake starts braking to prevent further uncontrolled movement of the vehicle, thus reducing the likelihood of further collisions.

TRACTION CONTROL SYSTEM (TCS)

TCS/ASR helps to stabilise the vehicle when accelerating or driving on low-grip roads. TCS/ASR reduces the drive power transmitted to the wheels when the wheels spin.

ANTI-LOCK BRAKING SYSTEM (ABS)

ABS helps maintain control of the vehicle during emergency braking. An ABS intervention is noticeable by pulsating movements of the brake pedal.

ROLL OVER PROTECTION

On identifying a rollover threat, the ESC brakes particular wheels as prevention.

BRAKE DISC WIPING

BSW (rain) feature is to prevent slow brake "kick-in" in emergency situations

MOTOR SLIP REGULATION (MSR)

MSR helps to maintain control of the vehicle in the event of a sudden reduction in speed. If wheels of the driven axle lock, MSR increases the engine speed. This reduces the braking effect of the engine and the wheels can rotate freely again.

ELECTRONIC DIFFERENTIAL LOCKING SYSTEM

EDS helps to stabilise the vehicle when driving on road surfaces with different grip under the individual wheels. XDS+ helps to keep the vehicle on the turn by effectively braking the wheels on the inner side of the turn. XDS is functional up to 30km/hr.



ENTERTAINMENT AND ASSISTANCE, AT YOUR FINGERTIPS.

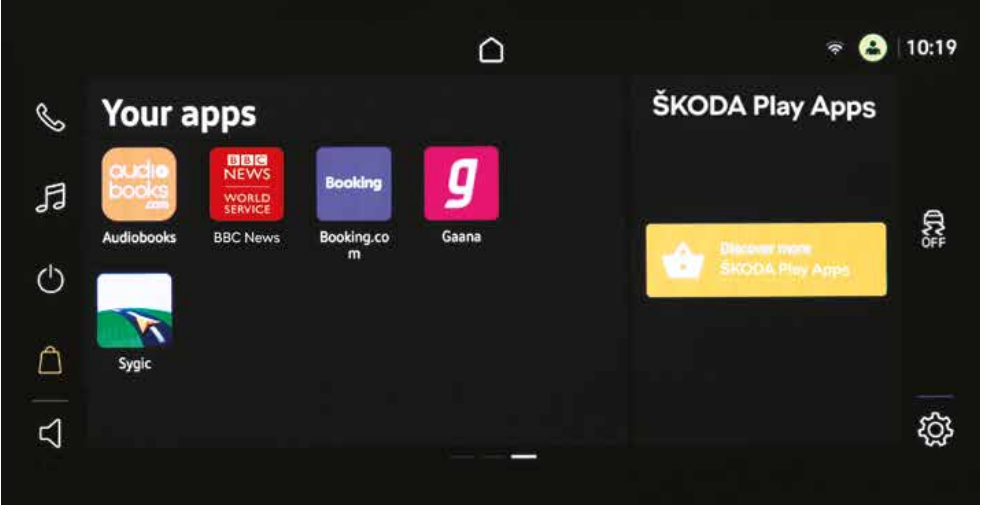
Journey with ease, no matter the destination. The ŠKODA KUSHAQ comes with a whole range of infotainment and connectivity features like ŠKODA PLAY APPS, navigation, valet mode and MyŠKODA Connect.

INFOTAINMENT AND CONNECTIVITY



25.4 CM INFOTAINMENT SYSTEM WITH ŠKODA PLAY APPS

A smart car must have a device that is able to adhere to every requirement. The 25.4 cm ŠKODA infotainment system is equipped with touch and gesture control with which you can navigate, make calls, browse the menu and drive without a worry.



ŠKODA PLAY APPS

The infotainment system comes with 5 downloadable apps - Audiobooks, Booking.com, Gaana, SYGIC Offline Navigation and BBC News.

SYGIC OFFLINE NAVIGATION

A detailed navigation system with 2D and 3D view.



Valet mode

Insert the PIN Code to unlock the system.
If you don't remember your PIN Code you can reset the device to factory settings. (?)

- ⚠ 2 km/h Reached
- ⚠ 0.0 km Distance
- ⚠ Passenger door open
- ⚠ Hood open

Type a number

- | | | |
|---|---|---|
| 1 | 2 | 3 |
| 4 | 5 | 6 |
| 7 | 8 | 9 |
| | 0 | |



VALET MODE

This feature starts recording the movements and behaviour when in the hands of a valet. It keeps a check on the car and alerts the owner at every step. When this feature is activated, the user can block all infotainment functions.



ŠKODA SOUND SYSTEM WITH 6 HIGH PERFORMANCE SPEAKERS AND SUBWOOFER

Enjoy absolute sound clarity with six speakers, including a speaker in the dashboard and a subwoofer in the luggage compartment.

TRACK YOUR CAR

Keep an eye on the car location from your home or office and stay informed when someone is driving your car.

REAL-TIME SPEED TRACKING

Monitor the real time driving speed.

GEOFENCE BREACH NOTIFICATION

Add Geofence boundary for your car, get an alert as Geofence area is breached.

ROAD SIDE ASSISTANCE

Get road side services like flat tyre repair, battery jump-start, refuelling, towing and a lot more.

SOS (EMERGENCY SMS WITH LOCATION)

Long press the SOS button to send an emergency SMS to your contacts with your location.

ROUTE TRACKING / DEVIATION ALERT

Live track the travel route taken by your family and get quick deviation alerts.

WALK TO CAR

Locate you car quickly in big parking lots or crowded areas.

DEVICE TAMPERING ALERT

Stay alert with prompt notifications on Device Tampering.

DRIVING BEHAVIOUR

Get real-time information on driving behaviour eg: harsh braking, sharp turns, over speeding, rapid acceleration, etc.

TOW ALERT

Get an alert in case your car is being towed away.



MyŠKODA CONNECT ONLINE SERVICES

The inbuilt MyŠKODA Connect mobile online services can be accessed at any time via the MyŠKODA Connect app. MyŠKODA Connect displays a clearly laid out Vehicle Health Report on the smartphone. The system automatically stores important data every time the ignition is switched off. Remote vehicle access is also available, which allows owners to retrieve vehicle information and driving data, including the car's parking location for instance.

SIMPLY CLEVER



CLEVER-UP.

The new ŠKODA KUSHAQ is equipped with our simply clever details that make every journey, and life in general a lot easier.



SMARTPHONE POCKET

A unique and thoughtful feature for rear passengers to store their smartphones safely.



SMARTGRIP BOTTLE HOLDER

A clever addition, it is designed to hold your bottles firmly in place, even allowing you to open them with one hand.



UTILITY RECESS ON THE DASHBOARD

A designated space on the dashboard to add a little bit of your personality to the car.

SMARTCLIP TICKET HOLDER

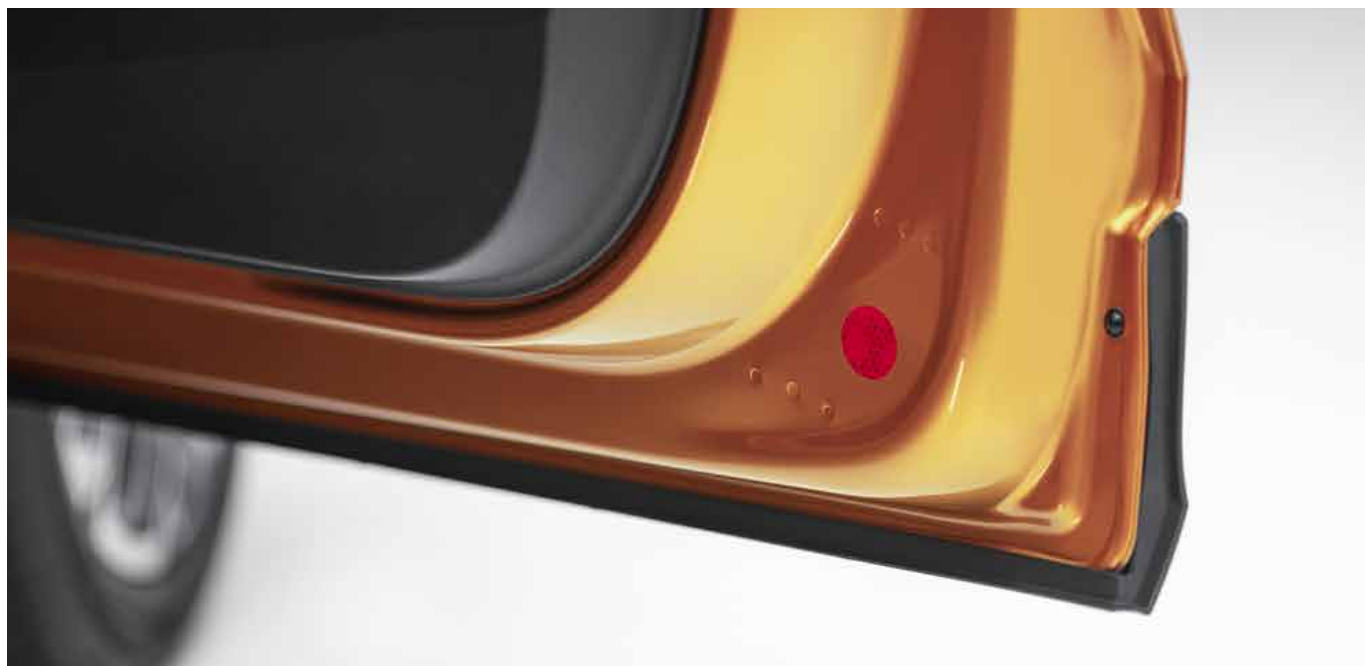
The SmartClip ticket holder at the side of your windshield is placed to ensure that the tickets that need to be displayed are done so without hassle.





DOCUMENT HOLDER ELASTIC STRING

The door features an elastic string to hold your documents, keeping your elegant interior tidy, and your belongings safe.



REFLECTIVE SAFETY TAPE ON ALL FOUR DOORS

Stay safe by staying visible even in low light conditions.



TWO 3 KG HOOKS IN THE TRUNK

A clever feature that enables you to keep your bags in one place without worrying about spillage.

STORAGE



CARRY ALL THAT MATTERS.

Take a look inside and you'll find plenty of storage spaces and compartments. There is ample space for phones, glasses, refreshments and all your other essentials in the car.



LUGGAGE CAPACITY

The ŠKODA KUSHAQ's luggage compartment features a lot of space and practical elements, which help keep the car tidy and prevent things from moving around. The car with standard rear seats (featuring 60:40 folding split) offers 385 litres of boot space with 2 fixed hooks and top-tether points. The rear seats can also be folded using a remote release button located in the luggage compartment.



STORAGE IN THE FRONT AND REAR DOORS

With designated spaces for bottles and cups in the front and rear of the car, the only thing one can spill is joy.



CUPHOLDERS IN ARMREST

Designated spaces for bottles and cups in the rear of the car help in elevating functionality of the interiors.



STORAGE IN FRONT CENTRE ARMREST

A place to house your devices, snacks and even electronics so they are within reach.



COOLED GLOVEBOX

The glovebox is spacious enough to hold everything you need. It can also be cooled down to keep your snacks fresh.

COMFORT AND CONVENIENCE



GET USED TO EXTREME COMFORT.

Luxury is often accompanied with exclusive comfort and rightly so. The new ŠKODA KUSHAQ is designed to provide comfort at its finest with its thoughtful technology and smart features. So, pick your spot and be spoilt for good.



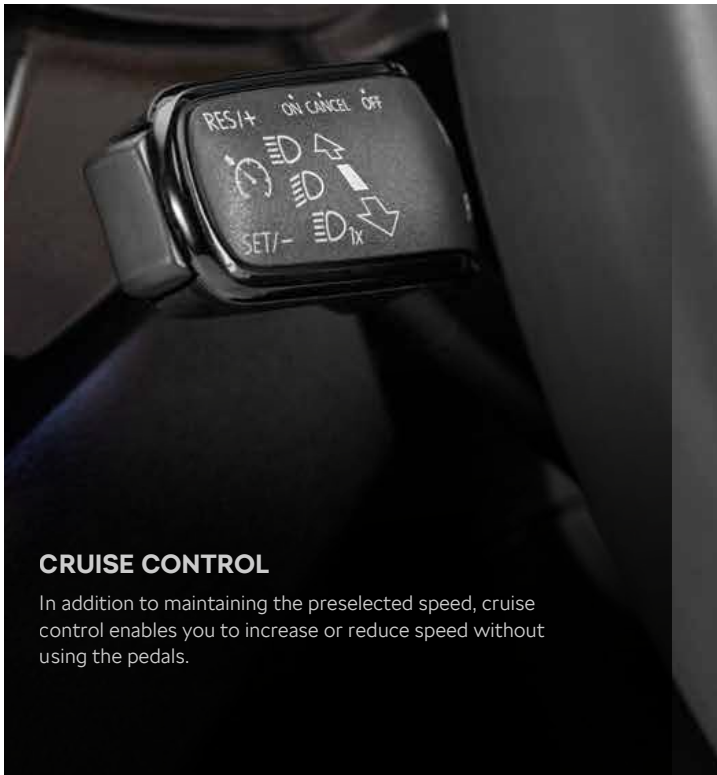
ALL NEW 2-SPOKE STEERING WHEEL WITH CHROME SCROLLERS

When function meets indulgence, the outcome is rather multifunctional. The steering wheel, clad with leather and chrome inserts, is equipped with audio controls, paddle shifters as well as the option of height and length adjustment for the driver.



KESY

The Keyless Entry Start & Stop System enables convenient locking and unlocking of the car.



CRUISE CONTROL

In addition to maintaining the preselected speed, cruise control enables you to increase or reduce speed without using the pedals.



ELECTRIC SUNROOF WITH ANTI - PINCH TECHNOLOGY

The electric sunroof with anti - pinch technology allows you to create a large open space above the seats, so you can enjoy new vistas and the journey even more.



CLIMATRONIC AIR CONDITIONING WITH AIRCARE FUNCTION

Climatronic automatic air conditioning with electronic regulation of cabin temperature to ensure that everyone in the car has maximum comfort.



REAR VIEW CAMERA WITH STATIC GUIDELINES

To make driving and parking a breeze, the car is equipped with a rear camera.



TWO USB-C SOCKET IN FRONT AND REAR

Charge your devices with ease with two USB-C sockets in the front and rear.



12V POWER SOCKET IN FRONT CENTRE CONSOLE

A 12V power socket is provided in the front centre console to give ease of use, on the go.



WIRELESS CHARGING

Wirelessly charge your phone while driving.



INSTRUMENT CLUSTER

The information display has 4 global MFA dials with 8.89 cm TFT display MAXIDOT showing the gear-shift indicator. The multifunctional segment displays basic travelling time, distance travelled, average speed, immediate consumption, average consumption, travel distance before refuelling, service interval, outside temperature and clock.



ADJUSTABLE REAR A/C VENTS

The adjustable rear A/C vents ensure comfort to all passengers abode the ŠKODA KUSHAQ.

WHEELS



ACTIVE

STEEL WHEELS R(16), LHOTSE



AMBITION

ALLOY WHEELS R(16), GRUS



STYLE

ALLOY WHEELS R(17), ATLAS

UPHOLSTERY



ACTIVE
Black fabric woven seats.



AMBITION
Black fabric seats with dual colour sporty centre stripes.



STYLE
Black front leather/rear leatherette seats with perforated grey designs.

COLOURS



HONEY ORANGE



TORNADO RED



CANDY WHITE



CARBON STEEL



BRILLIANT SILVER

TECHNICAL SPECIFICATIONS

TECHNICAL DESCRIPTION		1.0 TSI/85 kW		1.5 TSI/110 kW	
Engine		MT	AT	MT	DSG
Engine type		1.0 TSI Petrol, in-line, 4-Stroke Positive Ignition Direct Injection Engine		1.5 TSI Petrol, in-line, 4-Stroke Positive Ignition Direct Injection Engine with Active Cylinder Technology	
Clutch		Dry Single Plate	Hydro Dynamic Torque Converter	Dry Single Plate	Dry Double Clutch
Cylinders		3		4	
Displacement	[cm³]	999		1 498	
Max. power/revs	[kW at rpm]	85 / 5 000 - 5 500		110 / 5 000 - 6 000	
Max. torque/revs	[Nm at rpm]	178 / 1 750 - 4 500		250 / 1 600-3 500	
Fuel consumption - rule 115 of CMVR	[KMPL]	17.88	15.78	17.95	17.70
Transmission					
Wheel drive		Front Wheel Drive			
Transmission		6-speed	6-speed	6-speed	7-speed
Chassis					
Front axle		McPherson suspension with lower triangular links and stabiliser bar			
Rear axle		Twist Beam Axle			
Braking system		Hydraulic Diagonal Split Vaccum Assisted Braking System			
Brake – front		Disc			
Brake – rear		Drum			
Steering system		Electro-Mechanical Steering (Power Assisted)			
Wheels		Steel wheel 6J x R16 (Active), Alloy wheel 6J x R16 (Ambition Classic & Ambition), Alloy wheel 6.5J x R17 (Style)			
Tyres		205/60 R16 (Active, Ambition Classic & Ambition), 205/55 R17 (Style)			
Outside dimensions					
Length	[mm]	4 225			
Width	[mm]	1 760			
Height	[mm]	1 612			
Wheel base	[mm]	2 651			
Ground clearance (laden condition)	[mm]	155		155	
Ground clearance (unladen condition)	[mm]	188		188	
Inside dimensions					
Storage capacity	[l]	385 / 1 405			
Weights					
Kerb weight	[kg]	1 185-1 235	1 245-1 265	1 295	1 305
Gross weight	[kg]	1 630	1 660	1 685	1 700
Liquids					
Tank capacity	[l]	50 Litres			

EQUIPMENT	Active	Ambition Classic	Ambition	Style
DESIGN				
Wheels				
Steel wheels R(16) + wheel cover, Lhotse	■	-	-	-
Alloy wheels R(16), Grus	-	■	■	-
Alloy wheels R(17), Atlas	-	-	-	■
Spare wheel R(15)	■	■	■	-
Spare wheel R(16)	-	-	-	■
Exterior design and chrome décor				
Door handles in body colour without chrome accents	■	■	■	-
Door handles in body colour with chrome accents	-	-	-	■
Roof rails black with load capacity of 50 kg	■	-	-	-
Roof rails silver with load capacity of 50 kg	-	■	■	■
Aerodynamic trunk spoiler	■	■	■	■
ŠKODA Piano Black fender garnish with chrome outline	■	■	■	■
ŠKODA signature grille with chrome surround	■	■	■	■
Chrome highlights on front bumper air intake	-	■	-	■
Lower rear bumper reflectors	■	■	■	■
Exterior colour coding				
Black grained armoured front and rear diffuser	■	-	-	-
Silver armoured front and rear diffuser	-	■	■	■
Black side armoured cladding	■	■	■	■
Manually foldable external mirrors - body coloured	■	-	-	-
Electrically foldable external mirrors - body coloured	-	■	■	■
Matte black plastic cover on B-pillar and C-pillar	■	■	■	-
Glossy black plastic cover on B-pillar and C-pillar	-	-	-	■
Glossy White Roof Foil (For Carbon Steel body colour)	-	■	-	-
Glossy Black Roof Foil (For other body colours)	-	■	-	-
Window Chrome Garnish - Beltline	-	■	-	-
Window Chrome Garnish	-	-	-	■
Trunk Chrome Garnish	-	■	-	■
Door Lower Chrome Garnish	-	■	-	-

EQUIPMENT	Active	Ambition Classic	Ambition	Style
Interior design, chrome décor and colours				
Dashboard with grained and textured décor	■	-	-	-
Dashboard with painted décor insert	-	■	■	■
Premium honeycomb décor on dashboard	■	■	■	■
Black gloss dashboard line	■	■	■	-
Chrome dashboard line	-	-	-	■
Chrome décor for interior door handles	-	■	■	■
Chrome ring on the gear-shift knob	■	■	■	■
Black plastic handbrake with Glossy Black handle button	■	■	■	-
Black plastic handbrake with chrome handle button	-	-	-	■
Chrome insert under gear-shift knob	-	-	-	■
Black gloss surround on side air conditioning vents	■	-	-	-
Chrome trim surround on side air conditioning vents and insert on steering wheel	-	■	■	■
Chrome trim on air conditioning duct sliders	■	■	■	■
Front scuff plates with KUSHAQ inscription	-	■	■	■
SAFETY				
Illumination				
Halogen headlamps with ŠKODA crystalline day time running lights	■	-	-	-
ŠKODA crystalline LED headlamps with day time running lights	-	■	■	■
ŠKODA crystalline LED tail lamps with reflective lamp	■	■	■	-
ŠKODA crystalline split LED tail lamps	-	-	-	■
Front fog lamps with static cornering function	-	■	■	■
Light assistant - auto headlamps	-	-	-	■
Manual coming/leaving home lights	■	■	■	-
Automatic coming/leaving home lights	-	-	-	■
LED reading lamps - front and rear	■	■	■	■
Ambient interior lighting - dashboard and door handles	-	■	■	■
Rear LED number plate illumination	■	■	■	■

EQUIPMENT	Active	Ambition Classic	Ambition	Style
Visibility				
Anti-glare outside rear view mirror	■	■	■	■
Automatic front wiper system with rain sensor	-	-	-	■
Rear wiper and defogger	-	■	■	■
Auto dimming interior rear view mirror	-	-	-	■
Braking and stabilising systems				
ESC (Electronic Stability control), ABS (Anti-lock Braking System) & EBD	■	■	■	■
MKB (Multi Collision Braking)	■	■	■	■
HHC (Hill Hold Control)	-	■	■	■
EDS (Electronic Differential Lock System), XDS & XDS+ (over 30 Km/h)	■	■	■	■
TCS (Traction Control System), MSR (Motor Slip Regulation)	■	■	■	■
BDW (Brake Disc Wiping)	■	■	■	■
ROP (Roll Over Protection)	■	■	■	■
Airbags*				
Driver and passenger front airbags	■	■	■	■
Curtain airbags	-	-	-	■
Front side airbags	-	-	-	■
Occupant restraint				
Three-point seatbelts at front with pretensioner	■	■	■	■
Three-point rear outer and center seatbelt with pretensioner	■	■	■	■
Height adjustable head restraints at front and rear	■	■	■	■
Front seatbelt reminder	■	■	■	■
More				
TPMS (Tyre Pressure Monitoring System)	-	-	-	■
Rough Road Package	■	■	■	■
Child-proof rear door locking	■	■	■	■
Child-proof rear window locking	■	■	■	■
ISOFIX for rear seats	■	■	■	■
Door-open indicator	■	■	■	■
Emergency triangle in the luggage compartment	■	■	■	■
Dual-tone warning horn	-	■	■	■

*2 airbags option is available

EQUIPMENT	Active	Ambition Classic	Ambition	Style
SECURITY				
Electronic theft deterrence				
Engine immobiliser with floating code system	■	■	■	■
Anti-theft alarm	-	-	-	■
Remote operation				
Central door locking with speed sensor	■	■	■	-
KESY (Engine Start/Stop & Locking/Unlocking of Door)	-	-	-	■
Remote control with foldable key	■	■	■	■
Central locking and unlocking of doors and boot lid	■	■	■	■
COMFORT				
Seats				
Rear seats split 60:40 foldable with centre armrest	-	■	■	■
Height adjustment for driver seat	■	■	■	■
Front centre armrest with storage	■	■	■	■
Rear centre armrest	-	■	■	■
Upholstery				
Black fabric woven seats	■	-	-	-
Black fabric seats with dual colour sporty centre stripes	-	-	■	-
Black Suede Seats with Honeycomb design	-	■	-	-
Ventilated black leather front seats with perforated grey design	-	-	-	■
Black leatherette rear seats with perforated grey design	-	-	-	■
Steering wheel				
All new 2-Spoke Multifunctional Steering Wheel (PU) with chrome scroller	■	-	-	-
All new 2-Spoke Multifunctional Steering Wheel (Leather) with chrome scroller	-	■	■	■
Height and length adjustable steering wheel	■	■	■	■
Paddle shifters	-	■ (AT Only)	■ (AT Only)	■ (AT Only)
Infotainment and connectivity				
17.7 cm ŠKODA infotainment system with SDVS function	■	■	-	-

EQUIPMENT	Active	Ambition Classic	Ambition	Style
Wired SmartLink - Apple CarPlay and Android Auto	■	■	-	-
25.4 cm infotainment system with ŠKODA Play Apps	-	■	■	■
Wireless SmartLink - Apple CarPlay and Android Auto	-	■	■	■
6 speakers	■	■	■	-
ŠKODA sound system with 6 high performance speakers and subwoofer	-	-	-	■
MyŠKODA Connect - inbuilt connectivity	-	-	■	■
Climate control				
Manual AC	■	■	-	-
Climatronic-auto AC with control touch panel and AirCare function	-	-	■	■
Adjustable dual rear AC vents	■	■	■	■
Sunroof				
Electric sunroof with anti-pinch technology	-	-	-	■
Additional upholstery				
Front and rear door armrests with cushioned fabric upholstery	■	■	■	-
Front and rear door armrests with cushioned leatherette upholstery	-	-	-	■
Windows				
Power windows front and rear, 4 x controls on driver side	■	■	■	■
One-touch automatic operation (only driver side)	-	■	■	■
Bounce back system (only driver side)	-	■	■	■
More				
Dead pedal for foot rest	■	■	■	■
CONVENIENCE				
Information display				
2-dial global MFA (gear-shift indicator, multifunctional segment display basic)	■	-	-	-
4-dial medium MFA with 8.89 cm TFT display MAXIDOT (gear-shift indicator, multifunctional segment display, basic travelling time, distance travelled, average speed, immediate consumption, average consumption, travel distance before refuelling, service interval, outside temperature and clock)	-	■	■	■

EQUIPMENT	Active	Ambition Classic	Ambition	Style
Electronic driving aid				
Cruise control	-	■	■	■
Rear view camera - with static guidelines	-	■	■	■
Parktronic sensor at rear	■	■	■	■
More				
12V power socket in front centre console	■	■	■	■
Two USB-C sockets in front (data and charging)	-	■	■	■
Wireless charging (with selected smartphones)	-	-	-	■
Front sun visors with vanity mirror on co-driver side	■	■	■	■
Sharkfin antenna	-	■	■	■
Four Foldable roof grab handles	■	■	■	■
STORAGE				
385 litres of boot space with two fixed hooks and top-tether points	■	■	■	■
Storage compartment in the front and rear doors	■	■	■	■
Bottle holders in the front and rear doors	■	■	■	■
Cup holders - centre rear armrest	-	■	■	■
Storage compartment in the front centre console and centre armrest	■	■	■	■
Cooled Glovebox	-	■	■	■
Rear parcel shelf	-	■	■	■
Simply clever features				
Sunglass holder in roofliner	-	■	■	-
Front seat back pockets (driver and co-driver)	-	■	■	■
SmartClip ticket holder	■	■	■	■
Elastic bands on both front doors	-	■	■	■
Two USB-C sockets in rear (charging)	-	■	■	■
Coat hook on rear roof handles	■	■	■	■
Utility recess on the dashboard	■	■	■	■
Reflective tape on all four doors	■	■	■	■
Smartgrip mat for one hand bottle operation	■	■	■	■

Legend

- Equipment available on the marked trimline
- Equipment not available on the marked trimline



4-Year ŠKODA Warranty

- › 4 Years/1 00 000 km manufacturer-backed additional warranty
- › Promotional offer applicable in 3rd and 4th year up to a maximum mileage of 1 00 000 km, it remains with the vehicle even after changing hands

4-Year ŠKODA Assist

- › Exclusive 24x7 non-stop assistance service for 4 years, unlimited km
- › Assistance on-the-go any time of the day or night and anywhere in India

4-Year ŠKODA Maintenance Package*

- › 4 Years/60 000 km, 4 periodic maintenance services at the interval of 15 000 km or one year (whichever comes first)
- › Benefits redeemed at all authorised ŠKODA dealers across India, transferrable at the time of resale

Dealer:

Book your
ŠKODA KUSHAQ



**POWERED
BYTSI**

Download the
MyŠKODA App
for a hassle-free
ownership
experience.

♥ **YŠKODA**



www.skoda-auto.co.in | ☎ Toll-free 1800 2700 260

Issue Date: April 2022

The information, images, and content presented in this catalogue (brochure) are for illustrative purposes only and are not intended to form a part of any contract, offer, or warranty. Vehicles displayed are pre-series vehicles that are not an accurate representation of the final product. Illustration, features, parts, colours and equipment may differ from the actual production car and what can be ordered and provided. For more information, please contact your ŠKODA dealer.