

# SKODA | Slavia



**India's Safest Family Sedan**



Introduction

Exterior Design

Light Design

Interior Design

Performance

Safety

Storage & Utility

Wheels & Upholstery

Slavia Matte Edition

Slavia Elegance Edition

Colours & Special Editions

Technical Specifications





# An Ode to **Unexplored Roads**

Škoda Slavia is a masterpiece derived from Škoda's rich legacy of crafting the world's finest sedans. Beyond the sleek contours and bold design, it carries the essence of exploration and style in every inch. We invite you to begin your exploration journey in utmost comfort and luxury - Let's Drive, Let's Explore.





## Exterior Design

Effortlessly blending classic charm with contemporary design language.  
Turn heads everywhere you go with the stylish Škoda Slavia.





## Front View

Škoda Slavia leaves an indelible mark with its captivating design. The Hexagonal Grille with Chrome Surround and Crystalline LED Headlamps with L-Shaped DRLs ensure it stands out, even on the busiest of streets.





## Top View

Let in a little fresh air as you take a spin in your Škoda Slavia. The Electric Sunroof with Anti-Pinch Technology makes every journey memorable.





## Rear View

Škoda Slavia's rear embodies modern sedan finesse with features like the Crystalline Split LED Tail Lamps, chrome highlights, and a tapered sporty coupé form.





## Light Design

Enjoy exploration even after dark with the stylish Auto LED Headlamps.



# Enhance Your Exploration with Light Design



## Škoda Crystalline LED Headlamps with L-Shaped DRLs

The state-of-the-art headlamps are engineered with dependable fog lights to enhance visibility in rough weather. With Škoda Slavia's sleek DRLs amplifying the car's dynamic road presence, exploration remains uninterrupted.

## Škoda Crystalline Split LED Tail Lamps

Inspired by Czech heritage, the tail lamps shine with dynamic LED lights, and their sleek, contemporary design positions Škoda Slavia at the pinnacle of style.







# Interior Design

Elevate automotive aesthetics with the exquisite Stone Beige & Piano Black Luxe Interiors. Enhanced by a 20.32cm Virtual Cockpit, complemented with chrome accents and ambient lighting, every moment of your journey exudes unmatched style and sophistication.





# Comfort and Convenience

Features tailored to your needs, a tech-savvy world of comfort awaits as you set out on an exploration in this stylish sedan.



## Electric Sunroof with Anti-pinch Technology

The sunroof opens up for you to enjoy sunlight, fresh air and elevated views.



## Chrome Bezel Air Vents

Inspired by the metallic ring around the dial of a watch, the side air conditioning vents are adorned with magnificent chrome trims that stand out on the dashboard.



## Ambient Lighting

Set the vibe with ambient lighting and take your drive to the next level.



## All Weather Comfort

Škoda's commitment to comfort is evident in the ventilated black leather seats upfront, featuring a tasteful beige perforated design that guarantees optimal comfort in every weather condition.



## Footwell Illumination

Experience a new level of luxury in your car with our glowing Footwell Illumination.



## Electric Seats for Driver & Co-driver

Immerse yourself in ultimate comfort and luxury with our revolutionary 'first-in-segment' electric front seats.





# Infotainment, Cockpit, Connectivity

## One Touch, Limitless Experiences

Experience a hassle-free journey filled with endless entertainment and integrated features, all at your fingertips.





## 25.4cm Škoda Infotainment System

25.4 cm Infotainment System with ŠKODA Play Apps

## 20.32cm Škoda Virtual Cockpit

The virtual display behind the steering wheel features information like speed, distance travelled, service interval, average fuel consumption, and much more.







The inbuilt connectivity mobile online services can be accessed at any time via the MyŠKODA ConnectED app. The app displays a clearly laid out Vehicle Health Report on the smartphone. The system automatically stores important data every time the ignition is switched off. Remote vehicle access is also available, which allows owners to retrieve vehicle information and driving data, including the car's parking location.



### Track Your Car

Keep an eye on your car's location from your home or office and stay informed when someone is driving your car.

### Real-time Speed Tracking

Monitor the real-time driving speed.

### Geofence Breach Notification

Add a geofence for your car and get alerts when the boundary is breached.

### Roadside Assistance

Get roadside services like flat tyre repair, battery jump-start, refuelling, towing and a lot more.

### Device Tampering Alert

Stay alert with prompt notifications on Device Tampering.

### Driving Behaviour

Get real-time information on driving behaviour, e.g., harsh braking, sharp turns, overspeeding and rapid acceleration.

### Walk To Car

Locate your car quickly in big parking lots or crowded areas.

### Route Tracking/Deviation Alert

Live track the travel route taken by your family and get quick deviation alerts.

### SOS (Emergency SMS with Location)

Long press the SOS button to send an emergency SMS to your contacts with your location.

### Tow Alert

Get an alert in case your car is being towed away.





## Performance

Experience the thrilling fusion of raw power and efficiency. Our advanced 1.5L 110 kW (150 PS) TSI engine, equipped with Active Cylinder Technology (ACT), ensures unwavering performance. This powerhouse retains its eco-friendly edge with Start & Stop Recuperation (SSR) technology, setting a new standard for dynamic driving.





Škoda Slavia has 2 engine variants (1.0 TSI and 1.5 TSI) with 2 gearbox variants each. All variants have SSR and deliver efficiency with dynamism.

### Manual Transmission

Car comes equipped with 1.0 TSI and 1.5 TSI 6-Speed Manual Transmission.



### Automatic Transmission

Depending on the variant of your choice, the car comes equipped with 1.0 TSI 6-speed AT and 1.5 TSI 7-speed DSG.



Both engine variants of Škoda Slavia offer excellent transmission options for you to choose from.

### 1.0 TSI (Turbo Stratified Injection) Engine:

The 1.0 TSI engine, with 85 kW (115 PS) and 178 Nm torque, is powerful yet efficient. It is available in both manual and automatic transmissions.



### 1.5 TSI (Turbo Stratified Injection) Engine:

Škoda Slavia's 1.5 TSI engine with Active Cylinder Technology (ACT) churns out 110 kW (150 PS) and 250 Nm torque which ensure exceptional acceleration for sporty drives. It is available in both manual and automatic transmissions.





# Safety

Škoda Slavia is a safety marvel armed with 6 airbags, Anti-Theft Alarm, Electronic Stability Control (ESC), Traction Control System (TCS), Multi-collision Braking and a range of advanced safety technologies, ensuring a secure journey regardless of your destination.





## High Strength Steel Frames

Škoda Slavia has secured its position as India's safest family sedan with its robust, high-strength steel body that effectively absorbs kinetic energy, by minimizing the impact of any accident. Seamlessly integrated restraint systems like seat belts and airbags provide unbeatable on-the-go safety. Its marvelous design and engineering represent the epitome of safety, as evidenced by its 5-star Global NCAP rating for child and adult safety.

## Driver And Passenger Front Airbags

In case of an accident, the driver's airbag in the steering wheel and the passenger's airbag in the dashboard are always ready to protect you & your loved ones.

## Front Side Airbags

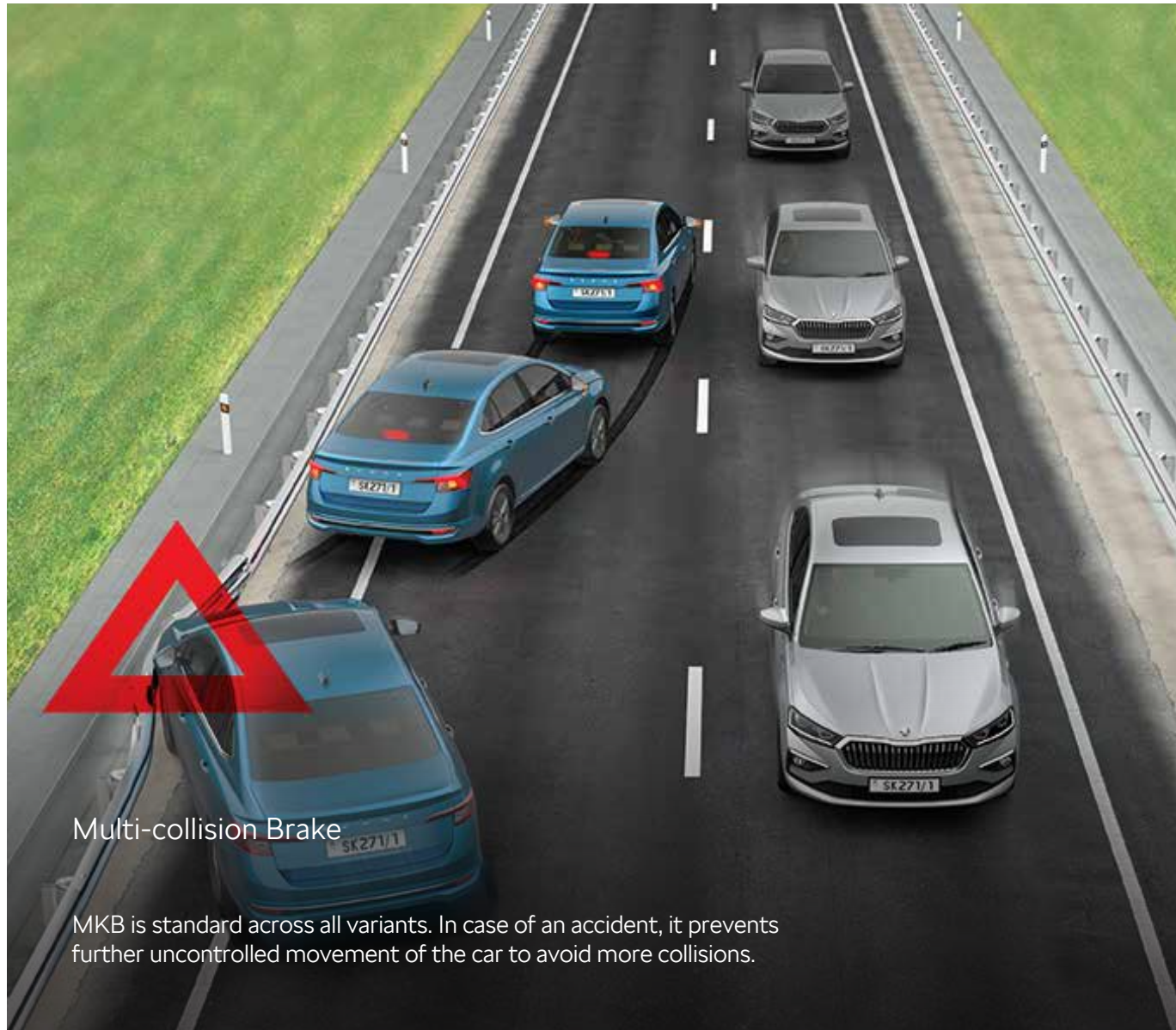
These airbags protect the pelvis and chest of the driver and passengers in case of a side collision.

## Curtain Airbags

These airbags shield the driver and passengers against head injury in the event of a side collision.







### Multi-collision Brake

MKB is standard across all variants. In case of an accident, it prevents further uncontrolled movement of the car to avoid more collisions.

### Anti-lock Braking System

ABS helps maintain control of the vehicle during emergency braking. An ABS intervention is noticeable from the pulsating movements of the brake pedal. This feature is standard across all variants.

### Electronic Differential Locking System

Standard EDS ensures stability on diverse road surfaces, while XDS+ helps cornering by braking inner wheels, effective up to 30km/h.

### Motor Slip Regulation

MSR ensures control by increasing engine speed if the driven axle wheels lock during sudden speed reductions, thus preventing wheel slip. Standard across all variants.

### Park Distance Control

Park in small spaces with ease. This system is standard across all variants and helps you factor in nearby objects to help you park safely.

### Anti-theft Alarm

This function, which is standard across all variants, detects vibrations to identify invalid access to the vehicle and immediately sends you an SMS in case of an attempted breach.

### Traction Control System

TCS/ASR, which is standard across all variants, helps stabilize the vehicle when driving on low-grip roads. It reduces the drive power transmitted to the wheels when they spin.

### Brake Disc Wiping

The BDW feature enhances safety while driving in the rain by removing excess water from the brake to maintain a short braking distance. This feature is standard across all variants.



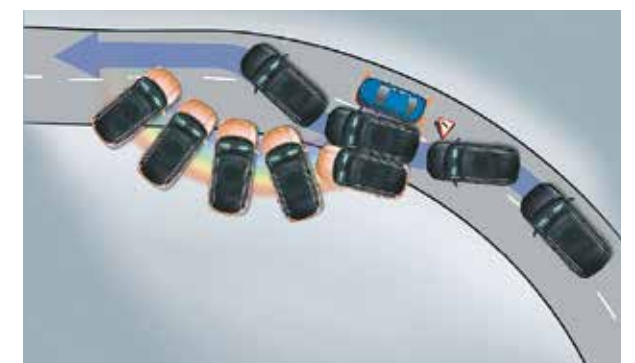
### Hill Hold Control

Conquer gradients with HHC that allows a safe start uphill without using the parking brake.



### Tyre Pressure Monitoring System

Avoid unnecessary pitstops by keeping tabs on your tyres. This feature, which is standard across all variants, detects and alerts the driver to a drop in pressure in any of the 4 tyres.



### Electronic Stability Control

Stay on course even in tricky situations. ESC helps to maintain directional stability and tyre traction during understeer and oversteer. This feature is standard across all variants.





## Storage and Utility

Škoda Slavia offers you more than just space. It has plenty of thoughtfully crafted storage options for all your travel essentials.





Storage In Front And Rear Doors



Cupholders In The Armrest



Storage In Front Centre Armrest



Cooled Glove Box

## Luggage Capacity

Never compromise on boot space. Škoda Slavia sets the standard with best-in-segment storage – 521 liters with rear seats up, and a whopping 1050 liters when folded down.



Driver Storage Compartment





#### Smartphone Pocket

This thoughtful feature for the rear passengers allows them to store their smartphones safely.



#### Reflective Safety Tape On All Four Doors

Open your door safely by staying visible to other drivers even in low light conditions.



#### Smart Grip Bottle Holder

Designed to hold your beverages firmly in place, this feature even allows you to open your bottle with one hand.



#### Smartclip Ticket Holder

Placed right at the side of the windshield, the SmartClip Ticket Holder ensures that the required tickets are displayed without hassles.



#### Utility Recess On the Dashboard

The additional space carved out on the dashboard adds an aesthetic touch to the interior design.



#### Two USB-C Sockets in the Rear

Passengers in the rear seats can easily charge their devices with two USB-C sockets.



#### Coat Hooks

The coat hooks on the rear roof handles help you keep your outfits handy without damaging them.





### 2-spoke Multi-functional Steering Wheel With Chrome Scrollers

The multi-functional steering wheel offers hassle-free audio control with stylish chrome scrollers and adjustable positioning for driver comfort.



### Climatronic Air Conditioning with Aircare Function

Climatronic automatic air conditioning maximizes cabin comfort for everyone.



### Kessy

The Keyless Entry Start & Stop System enables convenient locking and unlocking of the car.



### 12V Power Socket In Front Central Console

The power socket in the front central console helps you power devices on the go.



### Cruise Control

In addition to maintaining the preselected speed, cruise control enables you to increase or reduce speed without using pedals.



### Adjustable Rear A/C Vents

The adjustable rear A/C vents ensure comfort for the rear passengers in the car.



### Wireless Charging

Charge your phone wirelessly while driving (only on selected phones).



### Rear View Camera with Static Guidelines

Reverse and park safely with a rear camera.



# Wheels



## Active

R15 Steel Wheels With  
Carme Wheel Cover



## Ambition

R16 Lynx Alloy Wheels



## Style

R16 Ving Alloy Wheels

# Upholstery



## Active

Black Fabric Melange Woven Seats



## Ambition

Black Fabric Steps Woven Seats



## Style

Ventilated Black Leather Front Seats With  
Perforated Beige Design





# Introducing **Škoda Slavia Matte Edition**

Škoda Slavia Matte Edition is a sleek marvel meticulously designed for modern explorers. With cutting-edge features that seamlessly blend innovation and elegance, it's not just a car; it's an invitation to redefine your journey and make a bold statement on the road.



# Introducing **Elegance Edition** In Deep Black



**Radiator Chrome Grill**



**Chrome Side & Trunk Garnish**



**'Elegance' Badge on B-Pillar**



**Puddle Lamp**



**Scuff Plate with 'Slavia' Inscription**



**Textile Mat & Aluminium Pedal**



**'Elegance' Seat-Belt Cushions & Neck Rests**



**Steering Wheel 'Elegance' Badge**



**'Elegance' Cushions**



# Colours

\*Available on select variant only



Lava Blue



Crystal Blue



Tornado Red



Carbon Steel



Brilliant Silver



Candy White

# Special Edition



Elegance Edition - Deep Black

# Dual Tone Colours

\*Available on select variant only



Crystal Blue With Carbon Steel Roof

\*Available on select variant only



Brilliant Silver With Carbon Steel Roof



# Technical Specifications

Technical Description	1.0 TSI/85 kW		1.5 TSI/110 kW	
Engine	MT	AT	MT	DSG
Engine type	1.0 TSI Petrol , in-line, 4 Stroke Positive Ignition Direct Injection Engine		1.5 TSI Petrol , in-line, 4 Stroke Positive Ignition Direct Injection Engine with Active Cylinder Technology	
Clutch	Dry Single Plate	Hydro Dynamic Torque Converter	Dry Single Plate	Dry Double Clutch
Cylinders	3		4	
Displacement [cm³]	999		1498	
Max. power/revs [kWat rpm]	85/ 5000-5500		110 / 5000-6000	
Max. torque/revs [Nm at rpm]	178 / 1750-4500		250 / 1600-3500	
Fuel consumption - rule 115 of CMVR [kmpl]	20.32	18.73	19.00	19.36
Transmission				
Wheel drive	Front Wheel Drive			
Transmission	6 Speed	6 Speed	6 Speed	7 Speed
Chassis				
Front axle	McPherson suspension with lower triangular links and stabiliser bar			
Rear axle	Twist Beam Axle			
Braking system	Hydraulic Diagonal Split Vaccum Assisted Braking System			
Brake – front	Disc			
Brake – rear	Drum			
Steering system	Electro-Mechanical Steering (Power Assisted)			
Wheels	Steel wheel 6J x 15" (Active), Alloy wheel 6J x 16" (Ambition), Alloy wheel 6J x 16" (Style NSR/Style)			
Tyres	195/65R15-Active, 205/55R16-Ambition, Style NSR & Style			
Outside dimensions				
Length [mm]	4,541			
Width [mm]	1,752			
Height [mm]	1,507			
Wheel base [mm]	2,651			
Ground clearance (Laden condition) [mm]	145			
Inside dimensions				
Storage capacity [l]	521/1 050			
Weights				
Kerb weight [kg]	1,160 - 1,216	1,219-1,252	1237-1268	1246-1277
Gross weight [kg]	1 630	1 660	1 685	1 685
Liquids				
Tank capacity [l]	45			



Engine & Trim	Active	Ambition	Style	
Optional Features			Non-Sunroof	With Sunroof
1.0 TSI/85kW (115PS)	MT	MT/AT	MT	MT/AT
1.5 TSI/110kW (150PS)	-	MT/DSG	-	MT/DSG
Design				
Wheels				
Steel wheels R(15) + full wheel cover, Carme	■	-	-	-
Alloy wheels R(16), Lynx	-	■	-	-
Alloy wheels R(16), Ving	-	-	■	■
Spare Wheel R(15)	■	■	■	-
Spare Wheel R(16)	-	-	-	■
Exterior Décors				
Door handles in body colour without chrome accents	■	-	-	-
Door handles in body colour with chrome accents	-	■	■	■
Škoda Piano Black Fender Garnish with Chrome outline	■	■	■	■
Škoda Hexagonal Grille with Chrome Surround	■	■	■	■
Window Chrome Garnish	-	-	■	■
Lower Rear Bumper Chrome Garnish	-	-	■	■
Front Fog lamp Chrome Garnish	-	■	■	■
Lower Rear Bumper Reflectors	■	■	■	■
Exterior Colour Coding				
Manually foldable external mirrors - Body Coloured	■	-	-	-
Electrically foldable external mirrors - Body Coloured	-	■	■	■
Electrically Adjustable external mirrors	■	■	■	■
Matte Black Plastic cover on B-Pillar	■	■	-	-
Glossy Black Plastic cover on B-Pillar	-	-	■	■
Interior Décor and Colours				
Dashboard with Grained & Piano Black décor insert	■	-	-	-
Dashboard with Piano Black & Silver décor insert	-	■	-	-
Dashboard with Piano Black & Glazed décor insert	-	-	■	■

\*NSR - Non Sunroof Version

Equipment	Active	Ambition	Style	
Optional Features			Non-Sunroof	With Sunroof
Instrument Cluster Housing with Škoda inscription	■	■	■	■
Black interior door handles	■	-	-	-
Chrome décor on interior door handles	-	■	■	■
Chrome ring on gear shift knob	■	■	■	■
Chrome insert under gear shift knob	-	-	■	■
Black Plastic handbrake with Glossy Black handle button	■	■	-	-
Black Plastic handbrake with Chrome handle button	-	-	■	■
Beige Middle Console	■	■	-	-
Dual tone Black & Beige Middle Console	-	-	■	■
Glossy Black surround on side air conditioning vents	■	-	-	-
Chrome Bezel Air conditioning vents	-	■	■	■
Chrome Air conditioning duct sliders	■	■	■	■
Safety				
Illumination				
Škoda Crystalline Halogen Headlamps with LED Day time running lights	■	■	-	-
Škoda Crystalline LED Headlamps with 'L' Shaped Day time Running Lights	-	-	■	■
Škoda Crystalline LED Tail lamps with Reflective lamp	■	-	-	-
Škoda Crystalline Split LED Tail lamps	-	■	■	■
Front fog lamps	-	■	■	■
Light Assistant Auto Headlamps	-	-	■	■
Manual coming /leaving home lights	■	■	-	-
Automatic coming /leaving home lights	-	-	■	■
LED Reading Lamps - Front & Rear	■	■	■	■
Ambient Interior lighting - Dashboard & Door Handles	-	■	■	■
Footwell Illumination	-	-	■	■
Rear LED Number Plate Illumination	■	■	■	■
Boot Illumination	■	■	■	■
Visibility				
Anti-glare outside rear view mirror	■	■	■	■
Automatic front wiper system with rain sensor	-	-	-	■



Equipment	Active	Ambition	Style	
Optional Features			Non-Sunroof	With Sunroof
Rear Defogger	■	■	■	■
Auto dimming interior rear view mirror	-	-	-	■
Braking & Stabilizing Systems				
ESC (Electronic Stability control), ABS (Anti-lock Braking System) & EBD	■	■	■	■
MKB (Multi Collision Braking)	■	■	■	■
EDS (Electronic Differential Lock System), XDS & XDS+ (Over 30 Km/h)	■	■	■	■
TCS (Traction Control System), MSR (Motor Slip Regulation)	■	■	■	■
BDW (Brake Disc Wiping)	■	■	■	■
HHC (Hill Hold Control)	-	■	■	■
Airbags				
Driver & Passenger front airbag	■	■	■	■
Curtain Airbags	-	-	■	■
Front Side Airbags	-	-	■	■
Occupant Restraint				
Three-point seatbelts at front with Pretensioner	■	■	■	■
Three-point rear outer and centre seatbelt	■	■	■	■
Height adjustable head restraints at Front & Rear	■	■	■	■
Front Seat Belt Reminder	■	■	■	■
More				
TPMS (Tyre pressure monitoring system)	■	■	■	■
Child-proof rear door locking	■	■	■	■
Child-proof rear window locking	■	■	■	■
ISOFIX & Top tether points on Rear Seats	■	■	■	■
Door open indicator	■	■	■	■
Emergency triangle in luggage compartment	■	■	■	■
Dual-tone warning horn	-	■	■	■
Security				
Electronic Theft Deterrence				
Engine immobilizer with floating code system	■	■	■	■
Anti-Theft Alarm	■	■	■	■

Equipment	Active	Ambition	Style	
Optional Features			Non-Sunroof	With Sunroof
Remote Operation				
Central door locking with speed sensor	■	■	■	■
KESY (Engine Start/Stop & Locking/Unlocking of Door)	-	■	■	■
Remote control with foldable key	■	■	■	■
Central locking and unlocking of doors and boot lid	■	■	■	■
Comfort				
Seats				
Rear seats split 60:40 foldable with center armrest	-	■	■	■
Manual Height Adjustment for Driver seat	■	■	-	-
Electric Driver and Co-Driver Seats	-	-	■	■
Front centre armrest with storage	-	■	■	■
Upholstery				
Black Fabric Melange Woven seats	■	-	-	-
Black Fabric Steps Woven seats	-	■	-	-
Ventilated Black Leatherette Front seats with perforated beige design	-	-	■	■
Black leatherette rear seats with perforated beige design	-	-	■	■
Additional Upholstery				
Front & Rear Door armrest with cushioned fabric upholstery	■	■	-	-
Front & Rear Door armrest with cushioned leatherette upholstery	-	-	■	■
Steering Wheel				
2-Spoke Multifunctional Steering wheel (PU) with chrome scroller	■	-	-	-
2-Spoke Multifunctional Steering wheel (Leather) with chrome insert & scroller	-	■	■	■
Height & Length adjustable steering wheel	■	■	■	■
Paddle Shifters	-	■ (AT Only)	-	■ (AT Only)
Infotainment & Connectivity				
17.7cm Škoda Infotainment System	■	-	-	-



Equipment	Active	Ambition	Style	
Optional Features			Non-Sunroof	With Sunroof
Wired Smartlink - Apple Carplay & Android Auto via USB	■	■	■	■
20.32 cm Škoda Infotainment System	-	■	-	-
25.4 cm Infotainment System with Škoda Play Apps	-	-	■	■
4 Front Speakers (2x Tweeter, 2x Speaker) - 100W	■	-	-	-
8 Speakers (Front 2x Tweeter, 2x Speaker & Rear 2x Tweeter, 2x Speaker) - 200W	-	■	■	■
Škoda Sound System with 8 High Performance Speakers & Subwoofer - 380 W	-	-	-	■
MyŠKODA ConnectED - Inbuilt Connectivity	-	-	■	■
Climate Control				
Manual A/C	■	-	-	-
Climatronic - Auto A/C with control touch panel & Air Care function	-	■	■	■
Adjustable dual rear A/C vents	-	■	■	■
Sunroof				
Electric Sunroof with Anti-Pinch Technology	-	-	-	■
Windows				
Power Windows Front & Rear, 4x Control on Driver Side	■	■	■	■
One-touch automatic operation (Driver Side)	-	■	■	■
Bounce-back system (Driver Side)	-	■	■	■
Convenience				
Information Display				
2 dials global MFA (Gearshift indicator, multifunctional segment display Basic)	■	-	-	-
4 dials medium MFA with 3.5" TFT display MAXIDOT (Gearshift indicator, multifunctional segment display Basic Travelling time, Distance travelled, Average speed, Immediate consumption, Average consumption, Travel distance before refueling, Service Interval, Outside temperature, Clock)	-	■	■	-
20.32cm Škoda Virtual Cockpit	-	-	-	■

Equipment	Active	Ambition	Style	
Optional Features			Non-Sunroof	With Sunroof
Electronic Driving Assistance				
Cruise Control	-	■	■	■
Rear view camera - with static guidelines	-	■	■	■
Parktronic Sensors at rear	■	■	■	■
More				
Start & Stop function with Recuperation	■	■	■	■
12V power socket in front centre console	■	■	■	■
2 x USB-C Type socket in front (Data & Charging)	-	■	■	■
Wireless Charging (With Selected Smartphones)	-	-	■	■
Front sun visors with vanity mirror on co-driver side	■	■	■	■
Sharkfin antenna	-	■	■	■
Four Foldable roof grab handles	■	■	■	■
Storage				
521 litres Boot space	■	■	■	■
Storage compartment in the front and rear doors	■	■	■	■
Driver Storage compartment	■	■	■	■
Bottle holders in the front & Rear doors	■	■	■	■
Cup holders - Center Rear Armrest	-	■	■	■
Storage compartment in the front centre console & centre armrest	-	■	■	■
Cooled Glove Box	-	■	■	■
Advanced Features				
Sunglass Holder in Roofliner Front	-	■	-	-
Smart Phone Pocket (Driver & Co-Driver)	-	■	■	■
SmartClip ticket holder	■	■	■	■
Two USB-C socket in rear (Charging)	-	■	■	■
Coat hook on rear roof handles	■	■	■	■
Utility Recess on the Dashboard	■	■	■	■
Reflective Tape on all four Doors	■	■	■	■
Smart Grip Mat for one hand bottle operation	■	■	■	■

Legend

■ Equipment available on the marked trimline

- Equipment not available on the marked trimline



# SKODA

[www.skoda-auto.co.in](http://www.skoda-auto.co.in) | ☎ Toll-free 18 00 27 00 260

Dealer:

Specifications given differ from model to model. As a part of continuous product development, Škoda always upgrades its model range with innovative features. Such features are only available in the vehicles manufactured after a particular date. Please verify the feature list with our authorised dealer. Accessories shown may not be part of standard equipment. Always insist on genuine Škoda Auto parts and accessories available at authorised sales and service centres. Information relating to colours, prices, construction, technical details and equipment was valid at the time of issuance and these are subject to changes without any prior notice. All disputes are subject to the courts in Mumbai jurisdiction only. Terms and conditions apply. #Škoda Warranty - 4 years/1 00 000 km; Promotional offer, additional warranty 3<sup>rd</sup> & 4<sup>th</sup> year. Škoda Assist - 4 years unlimited km. Škoda Maintenance Package - 4 years/60 000 km; Four periodic maintenance services at the interval of 15 000 km or one year (whichever comes first from the date of delivery), available at an attractive price. The features mentioned in the catalogue(brochure) are of Style variant. These images are created using computer graphics and no real car is used while creating these images.