

Curvv.ev

SUV coupé



rear seat redefined —
executive experience reimaged

BNCAP
5-star safety rating*



unlimited joy —
with lifetime warranty

Lifetime
Warranty⁺⁺

on HV battery pack



i n d e x —

1. Shaped to Stun
2. Shaped for Innovative Technology
3. Shaped for Grandeur
4. Shaped for Absolute Safety
5. Shaped for Performance
6. Shaped for your various Charging needs
7. Shaped for different Personas

shaped to stun —

Up your style game with SUV allure and coupé sophistication.



Differentiated coupé like design

Experience the allure of an SUV with the sophistication of a coupé.



Body cladding in piano black finish

Define your elegance with every drive.



Squared wheel arches



Bumper skid plates in satin sliver finish

Combine toughness with style, giving your vehicle a sophisticated yet robust appearance.



Rear spoiler in gloss piano black

Designed for stunning looks and optimised aerodynamics.

Contrast roof in black

Complements the sleek coupé design adding a touch of sophistication.



**Smart digital connected DRL
with welcome & goodbye animation**

Greet and bid farewell with our
distinctive signature DRLs.



**Sequential
turn indicators**

Lead the way with
style and safety.



Smart charging animation

Stay informed about your
charge status at a glance.



LED projector head lamp

Drive with confidence
and clarity with
unmatched visibility.



Smart digital connected LED tail lamps with animation

Cutting-edge lighting technology meets style.



Smart digital steering wheel

Superior ergonomic experience with seamlessly integrated controls.



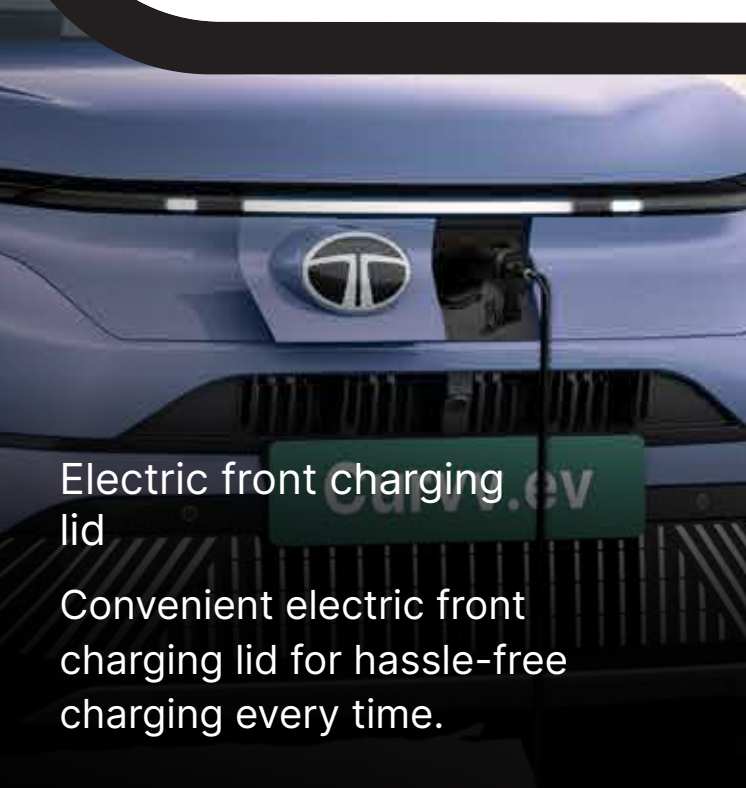
Flush door handles

Enhanced vehicle aesthetics while adding to aerodynamic efficiency.



R18 alloy wheels with aero inserts

Stylish, modern and aerodynamic design for a smooth and efficient drive.



Electric front charging lid
Convenient electric front charging lid for hassle-free charging every time.



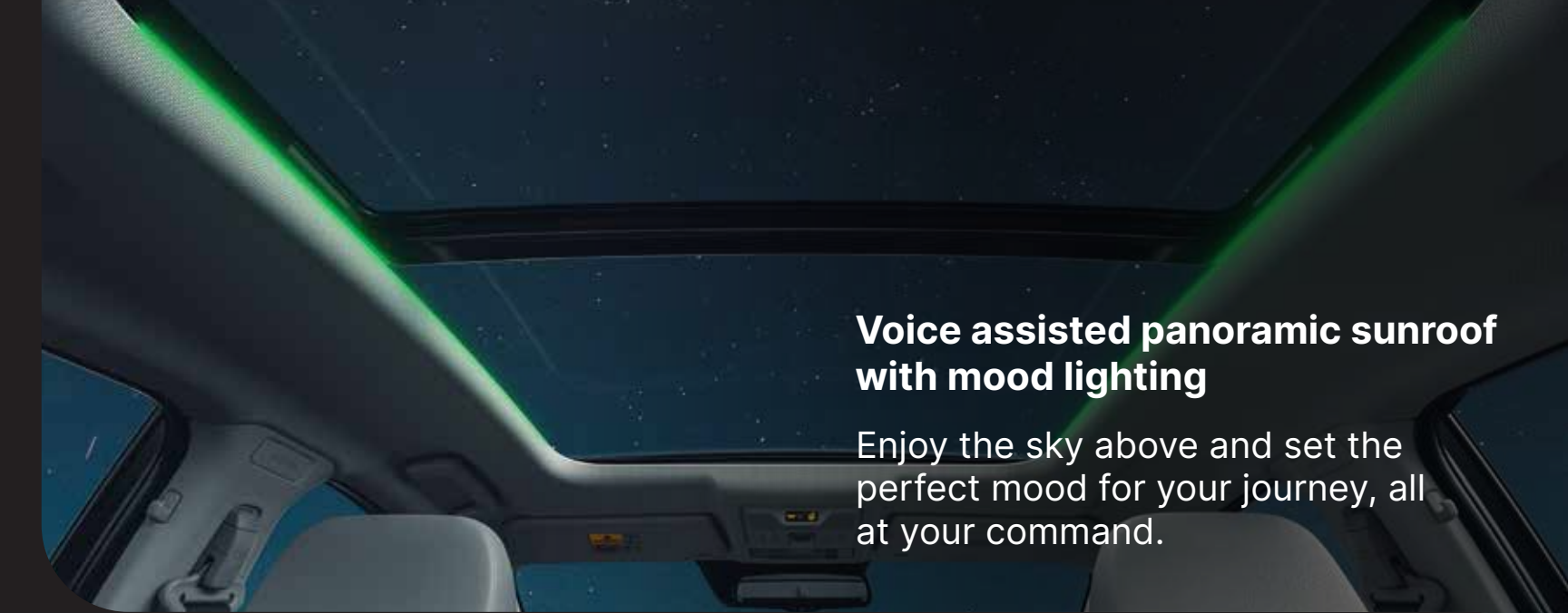
Digital dashboard
Your command center for the long journeys ahead.



Phyigital control panel
For simplified operation of essential functions.



Smart digital shifter
Sleek looks and a futuristic driving experience.



Voice assisted panoramic sunroof with mood lighting

Enjoy the sky above and set the perfect mood for your journey, all at your command.



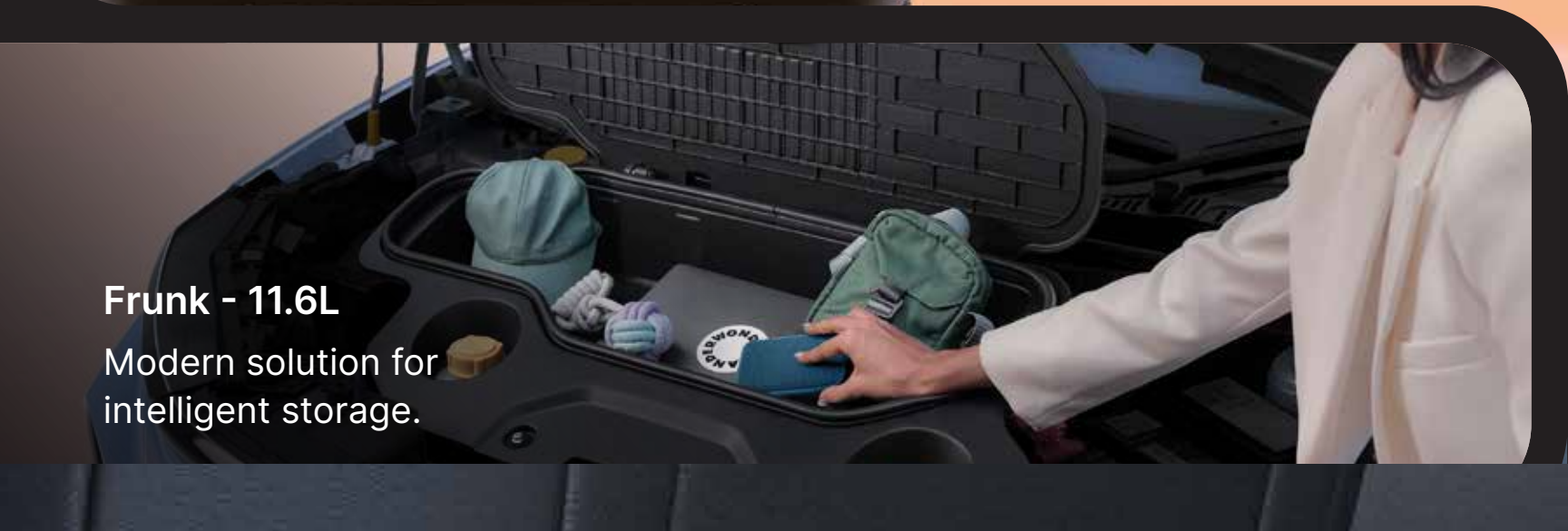
Multi mood ambient lighting

Illuminate your journey with the perfect ambiance, tailored to your every mood.



Boot space - 500L

There's always room for all your adventures, big or small.



Frunk - 11.6L

Modern solution for intelligent storage.



Sharkfin antenna with GPS

Where sleek styling meets superior connectivity.

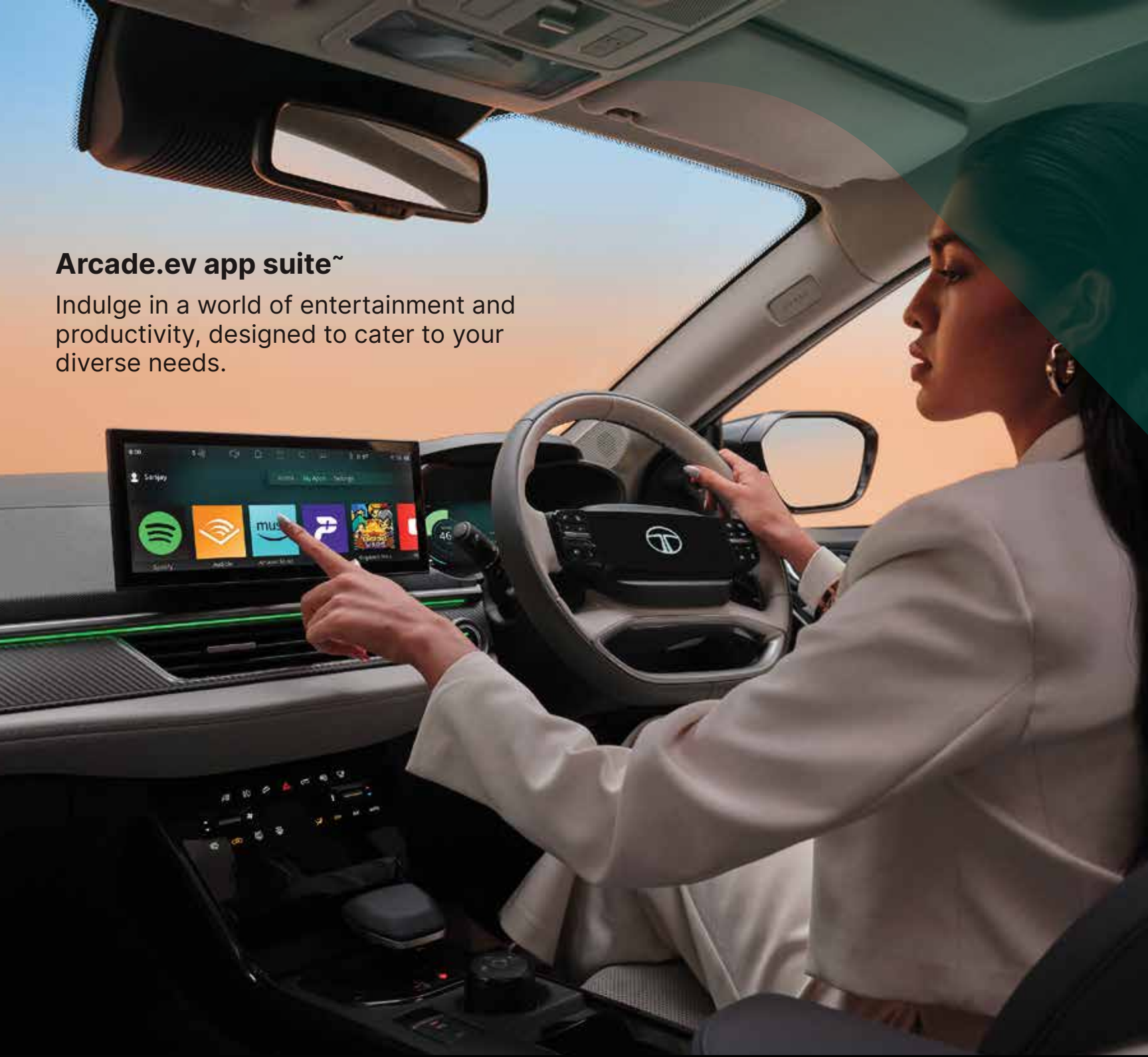
shaped for innovative technology —

Get entertainment and productivity on the go with modern tech.



Arcade.ev app suite~

Indulge in a world of entertainment and productivity, designed to cater to your diverse needs.



31.24 cm (12.3") Cinematic Touchscreen Infotainment System by HARMAN™

Bring your infotainment to life with stunning clarity and detail.



JBL cinematic sound system

Indulge in an experience that offers crystal-clear and immersive sound that enhances your in-car driving experience.

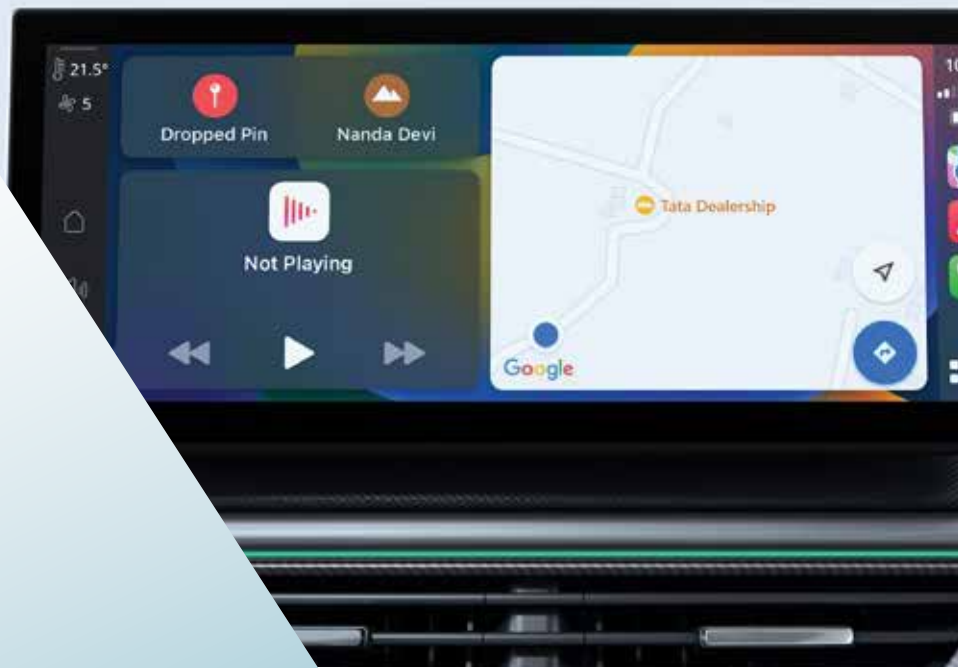
JBL

Wireless Android Auto™ and Apple CarPlay™

Connect wirelessly with ease.

High-quality speakers (9 speakers incl. subwoofer)

Ensuring every note and beat is delivered with exceptional clarity and depth.



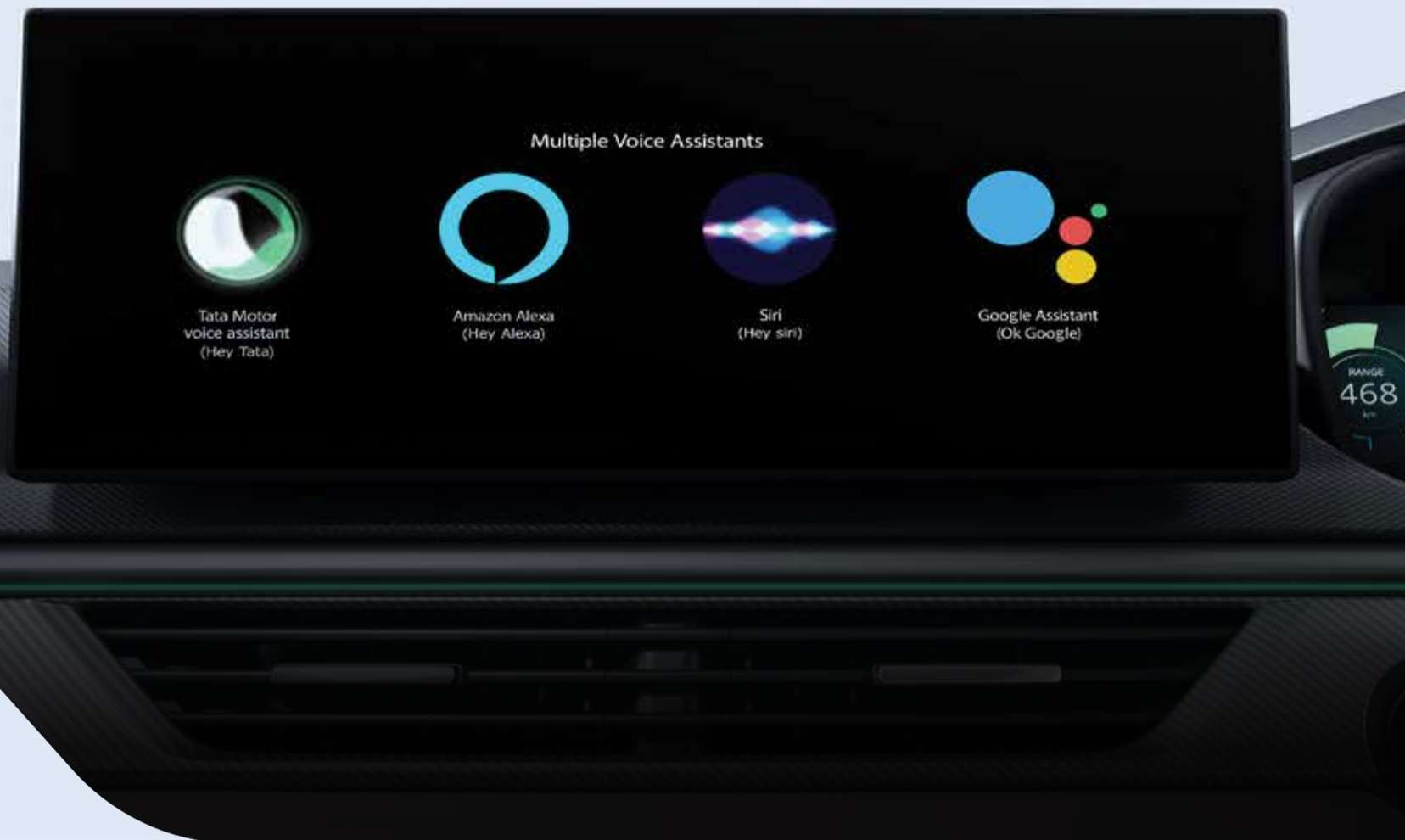
JBL sound modes

Multiple audio modes that enhance in-vehicle acoustic experience.



Multiple voice assistants

Interact effortlessly, ensuring seamless integration and enhanced connectivity.



Alexa voice assist

Access a world of convenience with Alexa voice assist.

Vehicle to vehicle (V2V) charging^{^^^}

Share power with compatible vehicles.



Vehicle to load (V2L) technology^{***}

Whether it is a drone, e-scooter or a camping experience - transform your EV into a mobile power hub.



Powered tailgate with gesture activation

Convenient loading and unloading with a simple kick gesture.



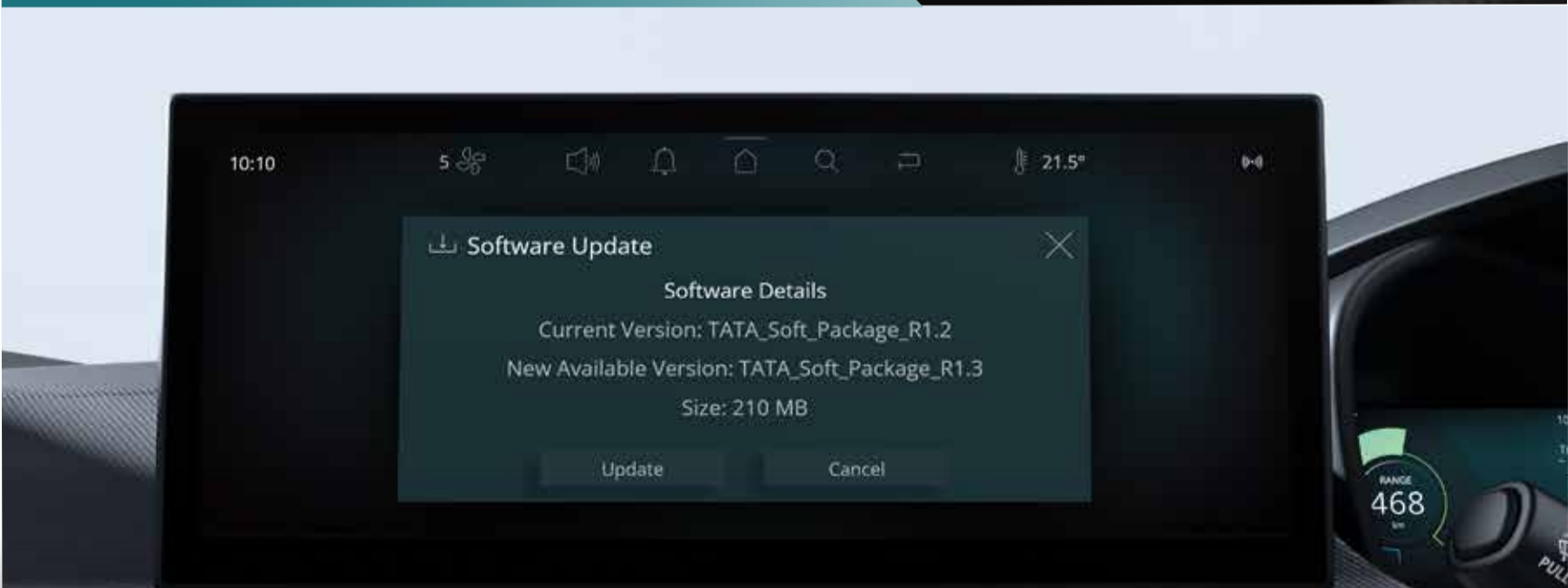
26.03 cm (10.25") digital cockpit

Stay informed and in control with customisable displays tailored to your preferences.



Multi dial view in cluster

Switch effortlessly between multiple displays.



OTA updates

Your car stays up to date with Over-the-Air Updates.

Air purifier with AQI display

Breathe fresh, drive safe.



Electric ORVM with autofold

Improved driving experience with easy mirror control.



Auto-dimming IRVM

Glare-free night drives.



Wireless smartphone charger

Stay powered up on the go and always ready for your next adventure.



iRA.ev^{##} & smart watch ^{^^} connectivity

Keep a watch on your Curvv.ev at all times.



shaped for grandeur —

Indulge in the luxury of first-class driving experience.





Plush Benecke-Kaliko Leatherette Seats with active ventilation

Luxurious and refreshing comfort for a first-class driving experience.



6 way power adjustable driver seat

Personalise your driving position with power adjustable settings.



6 way adjustable co-driver seat

Equal comfort for co-driver.



60:40 rear split seats with centre armrest

Adapt to your cargo and passenger needs.

Rear armrest with EasySip cup docks

Comfort flows through every seat.



PureComfort Footrest

A superior floor footrest that provides unmatched comfort for the rear co-passenger.



ErgoWing Headrest

Ergonomically designed winged headrests that cradle your posture and keep you relaxed, even on the longest drives.



India's First R-Comfort® Seats with Passive Ventilation

Seats that feel like a warm hug & makes every mile easier, so when you take the Curvv.ev, you enjoy unmatched comfort all the way.

R-Comfort® is a registered trademark of Adient.



Serenity screen rear sunshades

The rear sunshade transforms your cabin into a private oasis, shielding you from the heat while enhancing the exclusivity of your drive.

2 stage rear seat reclining

Personalised comfort for rear passengers during long journeys.



Rear AC vents

Efficient airflow for rear passengers.



Cooled glove box

A ventilated compartment for refreshing storage on the go.



Automatic headlamps

Optimal illumination on the road.





Rain sensing wipers

Clear visibility and enhanced safety during inclement weather.

FATC with express cooling

Personalised comfort for every drive.



Cruise Control

Maintain your desired speed with precision and ease on long journeys.

Keyless entry & push-button start

Unlock and go effortless convenience at your fingertips.



Front & rear fast charge C type 45W

Fast charge your devices.

shaped for absolute safety —

Stay safe keep the adventure alive on every journey.



BNCAP
5-star safety rating*



Advanced driver assistance - Level 2 ^Δ

An advanced driver assistance suite that offers a shield of protection on every journey.



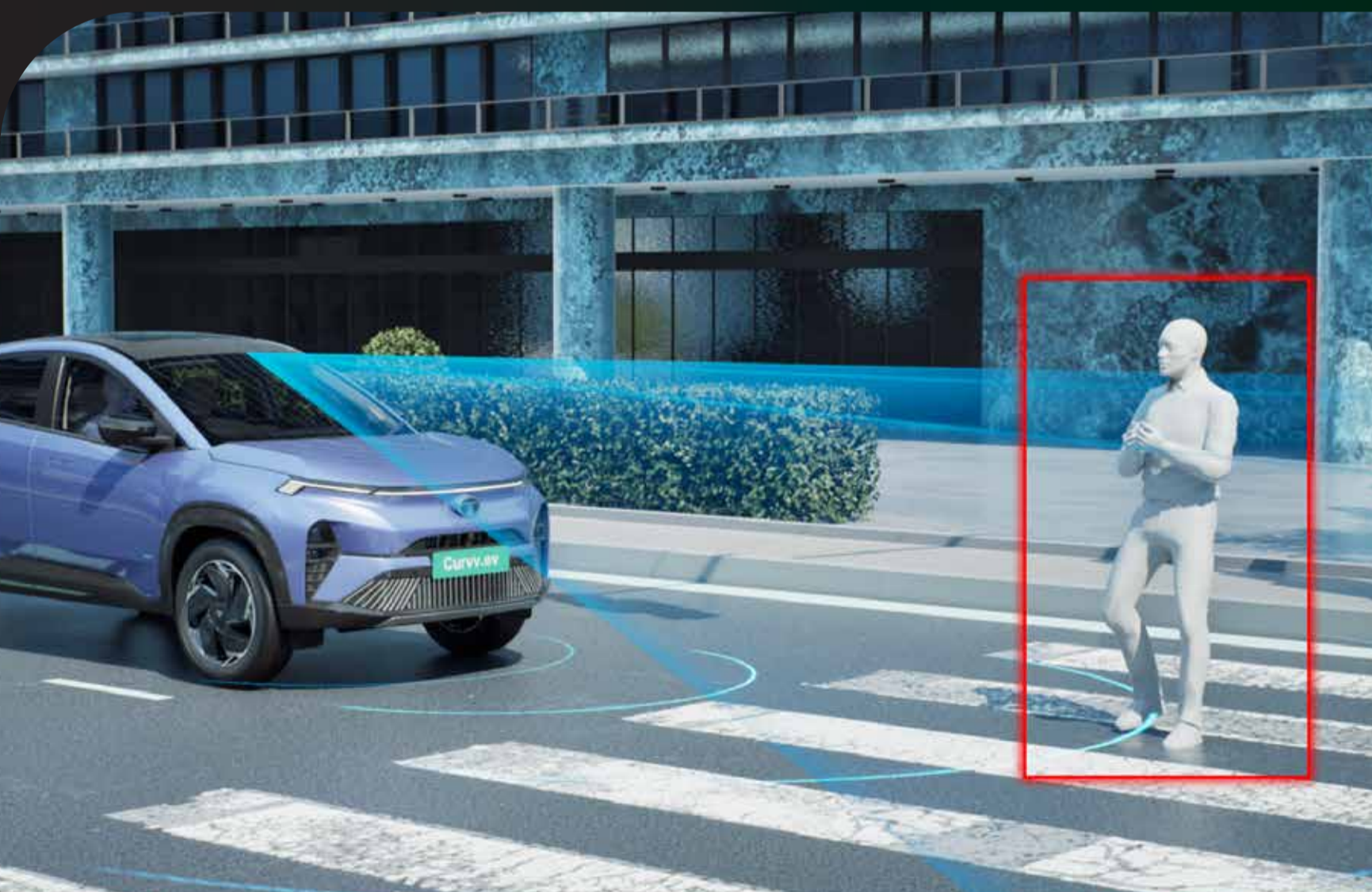
Adaptive Cruise Control (ACC) with stop & go and Adaptive Steering Assist (ASA)

Cruise through long journeys maintaining a pre-determined distance from the vehicle in front, even in stop-and-go traffic.



Lane Keep Assist (LKA)

Receive gentle nudges to keep you on course and in control on every curve.



Autonomous Emergency Braking (AEB) Vehicle, Pedestrian, Cyclist, Junction

Automatically applies brakes to prevent or mitigate collisions and keep you safe.



Traffic Sign Recognition (TSR) and Over Speed Alert (OSA)

Detects and displays traffic signs, ensuring you're aware of speed limits and other road regulations.



Rear Cross Traffic Alert (RCTA)

Detects approaching vehicles and alerts you of impending collision.



Lane Change Alert (LCA)

Alerts you of approaching vehicles while indicating a lane change.

360° 3D surround view camera system

Enhanced parking and maneuvering safety.



Blind Spot view Monitor (BSM) - camera based

Camera-based monitoring of blind-spots with display on infotainment screen or instrument cluster.



Blind Spot Detection (BSD) - radar based

Radar-based monitoring of blind-spots with warning indication on the ORVM.

Lane Departure Warning (LDW)

Get warnings and assistance to prevent unintended lane departures.

Forward Collision Warning (FCW)

Receive warnings to prevent front collisions.

High Beam Assist (HBA)

Ensures optimal visibility without dazzling other drivers.

Door Open Alert on ORVM

Alerts occupants while opening doors.

Driver doze-off alert

Electronic stability control based driver attention alert.

Rear Collision Warning (RCW)

Ensures you are alerted to any approaching dangers from the rear.



Electronic Parking Brake with Auto hold

Keeps your car at a complete stop until you press the accelerator.



SOS call function###

Immediate assistance in emergencies or breakdown.



Front parking sensors

Parking made easier with front assist sensors.



6 airbags

6 strategically placed airbags to minimise injury in the event of a collision.



All wheel disc brakes

Enhanced safety with disc brakes on all wheels for optimal stopping power.



Acoustic Vehicle Alert System (AVAS)^Φ

Signature sounds to alert pedestrians and other road users of your vehicle's approach.

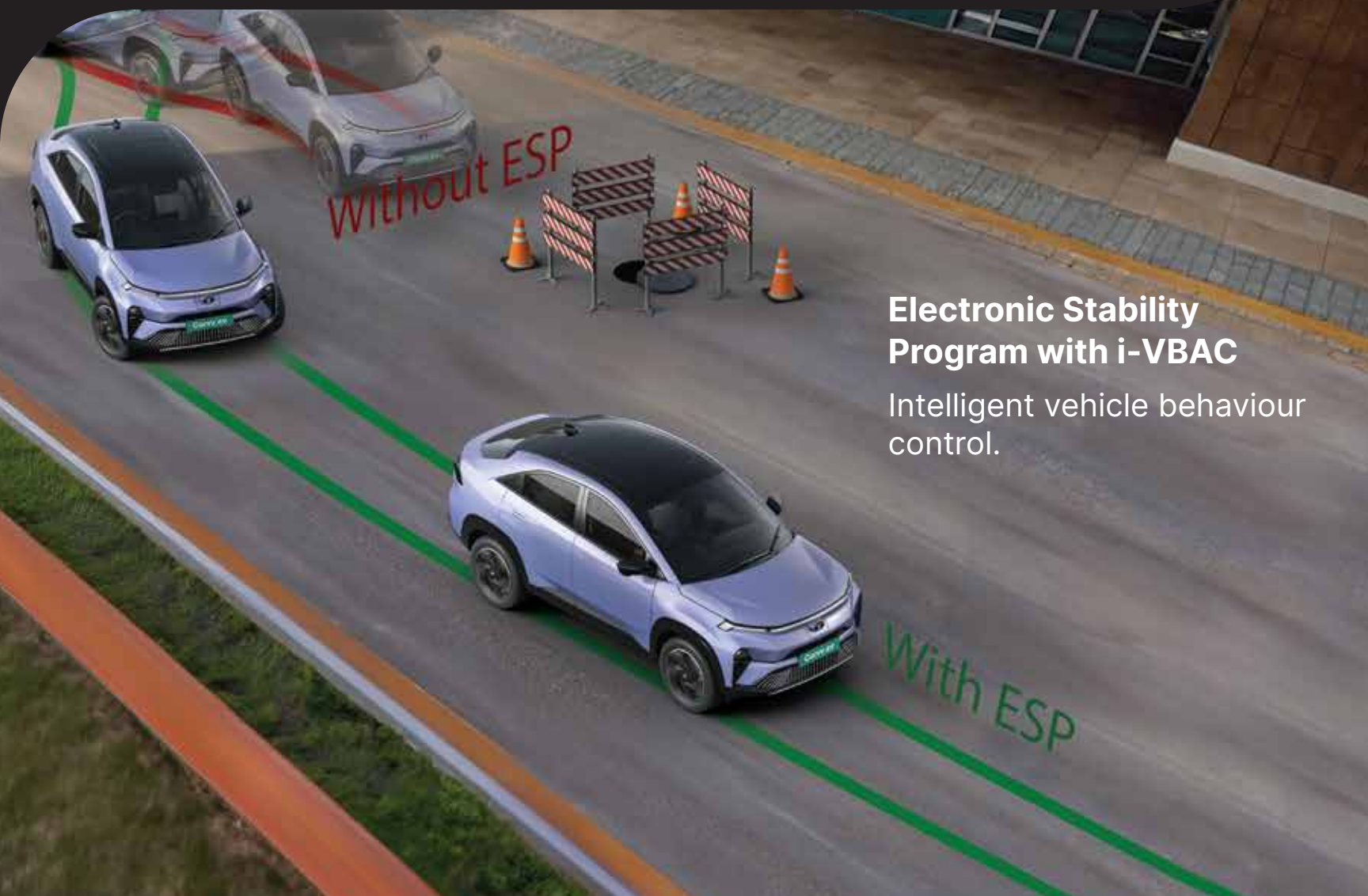
Hill hold assist

Holds your car from rolling back on any incline till you accelerate forward.



Hill descent control

Maintain a controlled speed for safer downhill driving.



Electronic Stability Program with i-VBAC

Intelligent vehicle behaviour control.

shaped for performance —

Experience dynamic performance for unforgettable drives.



Dynamic drive, thrilling performance

A dynamic driving performance for an unforgettable experience.



Long driving range of 502[#] Kms on a single charge

For extended adventures without the worry of a charging stop.

Power output of 123 kW (167 PS)

Unleash the power of the electric powertrain at the tap of the pedal.

Instant torque of 215 Nm

Instant peak torque for an exciting drive feel.

0-100 Km/h in 8.6 s

Fast when you need it to be.



Multi drive modes - Eco, City, Sport

Tailor your driving experience to suit your preferences.

Paddle shifters for multi-mode regenerative braking

Multiple regenerative braking modes to suit your regen preferences at the tap of a paddle.



All-new gen-2 motor

Robust performance and efficiency for an electrifying driving experience.



Liquid cooled battery pack

Ensuring Thermal efficiency for optimal battery health and durability.

IP67 rated battery pack and motor

Drive worry-free with high ingress protection standards.



Smart power electronics

Smart algorithms to control vehicle electronics, charging speeds and battery thermal management.

shaped for various charging needs —
Enjoy hassle-free drives with multiple charging options.



DC fast charging

Minimal downtime and maximum convenience.
SOC 10% - 80% in 40⁺ minutes.



7.2 kW AC home wall box charger

Power up at home seamlessly.

SOC 10% - 100% in 7.25⁺ hours for Curvv.ev 45 and 7.6⁺ hours for Curvv.ev 55.



15A portable charger

Enjoy charging convenience wherever you go. Charges with any 15A power socket.



shaped for different personas —



Multiple colour choices to pick from



Empowered



Empowered Oxide



Pure Grey



Flame Red



Pristine White

Virtual Sunrise

Accomplished



Pure Grey



Virtual Sunrise



Flame Red



Pristine White



Pristine White

Creative



Pure Grey



Virtual Sunrise

The images shown represent color availability for different personas only. Specifications may vary for each persona. The displayed colors may differ from the actual colors due to variations in screen settings, lighting conditions, and material finishes. For the most accurate color representation, please visit your nearest dealer.



Empowered



Accomplished



Creative

Curvv.ev - technical specifications and features

	Curvv.ev 55	Curvv.ev 45
electric drivetrain		
Motor (Type)	Permanent Magnet Synchronous Motor	
Electric Motor Power (kW/PS)	123/167	110/150
Electric Motor Torque (Nm)	215	215
Multi Drive Modes	Multi Drive Modes - Eco, City & Sport	
Battery Pack (kWh)	55	45
Thermal Management System	Liquid Cooled System	
Ingress Protection for Motor & Battery Pack	IP67	
Acceleration (0-100 km/h in sec)	8.6 [^]	8.8 [^]
Emission	Zero Tailpipe Emission	
smart drive features		
Smart Regenerative Braking	Multi-Mode Regenerative Braking 4 Levels Level 0 - 1 - 2 - 3 0 - No Regen 3 - Max Regen	
Paddle Shifters to Control Regen Modes	✓	✓
Customizable Single Pedal Drive	✓	✓
dimensions		
Length x Width x Height (mm)	4310 × 1810 × 1637	
Wheelbase (mm)	2560	
Unladen Ground Clearance (mm)	186	190
Boot space (L)	500	
steering		
Steering	Electrically Power Assisted	
Turning Circle Radius (m)	5.35	
brakes		
Front, Rear	Disc brakes with i-VBAC	
suspension		
Front Suspension	Independent McPherson Strut with Coil Spring	
Rear Suspension	Twist Beam with Dual Path Strut	
wheels & tyres		
Size	215/60 R17	(Creative & Accomplished)
	215/55 R18	(Empowered+)
Low Rolling Resistance Tires	✓	✓
charging		
Charging Standard	CCS2	
Portable Charging Cable	Yes	
Charging Options	15A Socket, 7.2 kW AC Wall Box, DC Fast Charger	
Charger Type Included	7.2 kW AC Wall Box	
Estimated DC Fast Charging Time (SOC 10% to 80% DC Fast Charger)	~ 40 min [^] (70 kW+ charger)	~ 40 min [^] (60 kW+ charger)
Estimated AC Fast Charging Time (SOC 10% to 100% from 7.2 kW AC Fast Charger)	~ 7.6hrs [^]	~ 7.25hrs [^]
Estimated Regular Charging Time (SOC 10% to 100% from an 15A plug point)	~ 21.0hrs [^]	~ 17.5hrs [^]
bi-directional charging		
Vehicle to Vehicle Charging (V2V ^{^^} Charging) (kVA)	5	-
Vehicle to Load Technology (V2L ^{***} Charging) (kVA)	3.3	-
Discharge Limit	Customizable upto 30% SOC ^Ω	
warranty		
HV Battery Pack	Lifetime Warranty and Unlimited Kilometres ⁺⁺	
Motor Warranty	8 Years or 1,60,000 km (whichever is earlier)	
Vehicle Warranty	3 Years or 1,25,000 km (whichever is earlier)	
driving range		
Certified Full Charge Range (as per MIDC Part 1 + Part 2 Cycle) [#] (km)	502	430
TATA.ev C75 estimated real world driving range (km)	400-425	330-350

creative 45

- Smart Digital DRLs
- LED Headlamps
- Flush Door Handles
- 17" Hyperstyle Steel Wheels
- Smart Digital Shifter
- Smart Digital Steering Wheel
- 6 Airbags
- ESP with i-VBAC
- Driver Doze-off Alert
- All Wheel Disc Brakes
- Electric Parking Brake with Auto Hold
- Camera & Sensor Based Reverse Park Assist
- 17.78 cm Touchscreen Infotainment by HARMAN™
- 17.78 cm TFT Instrument Cluster
- Android Auto™ & Apple CarPlay™
- 4 Speakers + 2 Tweeters
- FATC
- Cruise Control
- Push Entry Push Start (PEPS)
- Paddle Shifter for Regen Modes
- Multi Drive Modes - Eco, City & Sport
- Power Windows
- Rear AC Vents
- Electric ORVM
- 6 Way Adjustable Driver Seat
- 7.2 kW AC Fast Charger Wall Box
- Air Purifier
- i-TPMS
- iRA.ev^{##} & Smart Watch^{^^} Connectivity
- Multiple Voice Assistants (Native, Siri, Google Assistant)
- Rear Centre Armrest with EasySip Cup Docks
- PureComfort Footrest
- ErgoWing Headrest
- R-Comfort® Seats with passive ventilation

accomplished 45 & accomplished 55 addition to creative

- LED Projector Headlamps
- Centre Position Lamp and Connected Tail Lamps
- Sequential Indicators
- Front Fog Lamps with Cornering Function
- R17 Alloy Wheels with Aero Inserts
- Electric ORVM with Autofold
- 26.03 cm Cinematic Touchscreen Infotainment by HARMAN™
- 26.03 cm Digital Cockpit
- Navigation in Cockpit - Driver View Maps
- Android Auto™ & Apple CarPlay™ over WiFi
- 4 Speakers + 4 Tweeters
- HD Camera Based Reverse Park Assist
- Front & Rear Fast Charge C Type 45W
- Cooled & Illuminated Glove Box
- Plush Benecke-Kaliko Leatherette Seats
- Leatherette Wrapped Steering Wheel
- Front Armrest
- Tire Pressure Monitoring System
- Alexa™ Voice Assistant
- Serenity Screen Rear Sunshades

accomplished+ S 45 &

accomplished+ S 55

addition to accomplished

- 360° 3D Surround View Camera System
- Blind Spot View Monitor
- Front Parking Sensors
- Panoramic Sunroof
- Arcade.ev~ App Suite
- Wireless Smartphone Charger
- Express Cooling
- Rain Sensing Wipers
- Auto Headlamps
- Automatic Defogger

empowered+ 55

addition to accomplished+ S

- Smart Digital Lights
 - Welcome & Goodbye Sequence
 - Charging Indicator
- R18 Alloy Wheels with Aero Inserts
- Multi Mood Ambient Lighting
- Voice assisted Panoramic Sunroof with Mood lighting
- 6 Way Power Adjustable Driver Seat
- 6 Way Adjustable Co-Driver Seat
- 60:40 Rear Split Seats
- 31.24 cm Cinematic Touchscreen Infotainment by HARMAN™
- JBL™ Cinematic Sound System(4 Speakers + 4 Tweeters + Subwoofer)
- JBL™ Sound Modes
- Acoustic Vehicle Alert System (AVAS)^φ
- Air Purifier with AQI Display
- Auto Dimming IRVM
- Front Seats Active Ventilation
- 2 Stage Rear Seat Recline
- Frunk
- V2V Charging^{^^}
- V2L Technology^{***}

empowered+ A 55

addition to empowered+

- Level 2 ADAS[▲]
 - Adaptive Cruise Control with Stop & Go (ACC)
 - Lane Departure Warning (LDW)
 - Lane Keep Assist (LKA)
 - Blind Spot Detection (BSD) - Radar based
 - Blind Spot View Monitor (BSM) - Camera based
 - 360° 3D Surround View Camera System
 - Lane Change Alert (LCA)
 - Adaptive Steering Assist (ASA)
 - Forward Collision Warning (FCW)
 - Autonomous Emergency Braking - Vehicle (AEB - V)
 - Autonomous Emergency Braking - Pedestrian (AEB - P)
 - Autonomous Emergency Braking - Cyclist (AEB - C)
 - Autonomous Emergency Braking - Junction (AEB - J)
 - High Beam Assist (HBA)
 - Traffic Sign Recognition (TSR)
 - Over Speed Alert (OSA)
 - Rear Cross Traffic Alert (RCTA)
 - Rear Collision Warning (RCW)
 - Door Open Alert on ORVM
 - Driver Doze-off Alert
- SOS call####
- Powered Tailgate with Gesture Activation

Coverage of Lifetime HV Battery Warranty is as below:

Model / Brand	Lifetime Warranty First Registration		Standard Warranty Second Registration onwards*** (whichever occurs first)	
	Years	Km	Years	Km
Curvv.ev	Lifetime*	Unlimited**	8 [▲]	1.6 Lakh [▲]

*The term 'Lifetime' refers to the period of fifteen years from the first date of registration of the vehicle at the local regional transport office, in accordance with the Motor Vehicles Act, 1988, and is restricted for the period of use during the first registration only.

** The term 'Unlimited' is on the assumption of fair usage by a customer for personal use of the vehicle and therefore excludes extra-ordinary usage or usage outside the ordinary course as would be reasonably expected for vehicle not being used for commercial / trade purposes.

*** It is incumbent on every second (or subsequent) owner to inform TATA Passenger Electric Mobility Limited of the vehicle ownership transfer for HV Battery Warranty to apply. The HV Battery Warranty stated above shall not be available to the second or subsequent owner in absence of such notification.

Disclaimers:

▲Under ambient test conditions. ▲As per internal testing data, under ambient test temperature conditions. ▲ARAI Certified Urban + Extra Urban (MIDC Part 1 + Part 2) under standard testing conditions, actual performance figures may vary depending on various conditions including driving pattern, etc. **Smart watch is not part of vehicle equipment & accessories. ***Applicable for compatible sink models only at a power output of 5kVA. ****Maximum amount of power output is 3kVA. **Customers will be able to utilize iRA.ev services for one year from the date of activation. Post completion of one year, customers can subscribe to iRA.ev by paying subscription fees. R-Comfort® is a registered trademark of Adient. -Linked with active iRA.ev login. ****Available in select cities. ▲Applicable on Empowered persona and #DARK. *The Acoustic Vehicle Alerting System (AVAS) enhances pedestrian awareness at speeds up to 20 kmph. It complies with safety regulations but should not replace vigilant driving practices. ▲Advanced driver assistant systems (ADAS) is not a substitute for human eye or driver vigilance. It is a driver assist system only to enhance safety and driving experience. The driver will remain responsible for safe, vigilant and attentive driving. Standard Disclaimer - Accessories/features shown may not be part of the standard fitment. The specification above are subject to change. Some of the equipment illustrated or described above may not be supplied as standard equipment and may be available at extra cost. Tata Passenger Electric Mobility reserves the right to change specification & equipment of any product without prior notice. Please consult your nearby dealer for full information and availability on colours and trim. The images shown represent color availability for different personas only. Specifications may vary for each persona. The displayed colors may differ from the actual colors due to variations in screen settings, lighting conditions, and material finishes. For the most accurate color representation, please visit your nearest dealer. The warranty on the High Voltage battery shall be lifetime** for the first registration. **The term 'Lifetime' refers to the period of fifteen years from the first date of registration of the vehicle at the local regional transport office, in accordance with the Motor Vehicles Act, 1988.