



# WELCOME THE KING OF SUVs



CONQUERER.  
UNBEATABLE.  
*Awesome*



# LAND CRUISER

## NOW IN GR SPORT



Pushing the limits for Better

# TIMELESS LEGACY

THE NAME LAND CRUISER EVOKES STRONG EMOTIONS. TERMS LIKE EPIC AND PHENOM ARE OFTEN ASSOCIATED WITH IT. THAT SAID, MERE WORDS CAN'T EVEN BEGIN TO FATHOM THE LARGER THAN LIFE IMAGE THE LAND CRUISER HAS CARVED OUT FOR ITSELF OVER THE YEARS.

THE CHRONICLES OF AUTOMOBILE HISTORY ARE ABOUND WITH LEGENDARY TALES OF ITS EXPLOITS AND ESCAPADES. EVERYTHING ABOUT IT IS PART OF POPULAR FOLKLORE. SO HALLOWED IS THE LAND CRUISER, IT RESTS ON THE ABSOLUTE MOUNT RUSHMORE OF ICONIC AUTOMOBILES.







# KINGDOM ON WHEELS

WHEN YOU HAVE BEEN THERE AND DONE THAT AND  
THERE'S NOTHING MORE TO PROVE. WHEN YOU ARE  
AMONG THE WHO'S WHO OF THE WORLD. WHEN YOUR  
DISCERNING TASTES SPEAK MORE THAN WORDS. YOU  
NEED A MASTERPIECE REDEFINED WITH HYPNOTISING  
ELEGANCE, RAMP-WALKING THROUGH TOUGH TERRAINS.

# WONDERS OF THE MODERN WORLD

THE LAND CRUISER IS A CONSOLIDATION  
OF EXCELLENCE, TRUE TO IT'S PROMISES.  
IT KNOWS ONE AND ONLY ONE THING,  
AND THAT IS TO RULE. THE MEGALITHIC  
EXTERIOR ONLY GOES ON TO  
ACCENTUATE IT. NO BLING, NO FRILLS,  
BUT FLAMBOYANT NONETHELESS.





## BUILT LIKE A TANK

The Land Cruiser is armoured to the teeth like a true conqueror. It's designed to overwhelm and built to ravage any terrain. The torso with powerful door cross section as well as a horizontal axis and fender flare mass interdigitate clearly express the robustness of a full-fledged SUV.



### STUNNING ALLOYS

50.8 cm Alloy wheel expresses the dignity and distinctive presence



### CAPTIVATING FRONTLINE

Design signature with sequential turn indicators and illuminated DRLs



### ASTOUNDING REAR END

High-grade rear combination lamps with sequential turn indicators



### PREMIUM BODY COATING

Highlight your overwhelming presence with a coating of rich gloss

# **CONTROL COMMAND CONQUER**

A CAPTAIN SHOULD ALWAYS BE IN CONTROL OF  
HIS SHIP. WITH THE LAND CRUISER, IT'S SPOT ON.  
IT IS ALWAYS IN CONTROL AND MAKES NO  
EXCUSES. WHEN WE SAY, IT NEVER FAILS YOU,  
NOBODY WILL EVER DOUBT IT. THAT'S HOW  
TRUSTED THE LAND CRUISER IS.



## WORLD AT YOUR FINGERTIPS

Slide into a world of luxury while you make all the headlines. The Land Cruiser is an epitome of impeccable and royal lifestyle. It's tough to mix business with pleasure, but for a Land cruiser both becomes easy.



### DRIVE MODES

Enhances driving pleasure with 5 N Modes + Customised drive modes.



### 4 N ZONE AIR CONDITIONING

The cool air conditioning cools the whole cabin of the Land Cruiser with large vents even in the rear



### TNGA-F PLATFORM

Excellent ride comfort and handling ability along with exceptional off-road stability



# OPULENCE IS A GIVEN

WHEN IT COMES TO THE LAND  
CRUISER, COMFORT AND LUXURY IS A  
GIVEN. IT'S TAKEN FOR GRANTED THAT  
IT WILL BE DECKED WITH THE PINNACLE  
OF OPULENCE. EVERY LAND CRUISER IS  
A TESTIMONY OF THAT.

THE LAND CRUISER IS THE ONE THAT  
EVENS OUT ALL THE ODDS.



## LUXURY THAT KNOWS NO BOUNDS

The Land Cruiser is designed to be formidable and is steeped in luxury. And speaking of luxury, its interiors are simply suave and sublime with a classic ambience. The 5N-Seater leather seats are plush and provide superior ergonomic support while conquering uncharted territory. Decked with 31.2 cm infotainment & 14 N JBL Speakers you can dominate and conquer in full entertainment.



Neutral Beige Interiors



Black Interiors

## LAP OF LUXURY

40:20:40 split seat with genuine leather.

# THE LEGACY OF LAND CRUISER. THE PEDIGREE OF RACING.

THE LAND CRUISER GR SPORT  
BORROWS FROM THE WORLD OF  
EXTREME OFF-ROAD RACING YET  
MAINTAINS WINNING LEVELS OF  
COMFORT AND LUXURY. ITS RALLY  
INSPIRED INTERIOR HAS TOUCHES OF  
CARBON FIBRE LOOK TRIM, GENUINE  
LEATHER AND EXCLUSIVE GR  
BADGING THROUGHOUT. FEEL THE  
SPIRIT OF RACING.



*Pushing the limits for Better*



## TAKE OFF-ROAD CAPABILITY TO NEW HEIGHTS

TAKING OFF-ROAD CAPABILITY TO NEW HEIGHTS IS THE LAND CRUISER 300 GR SPORT.

ARRIVING WITH BOTH FRONT AND REAR ELECTRONIC DIFFERENTIAL LOCKS, FIVE DRIVE MODES (ECO, NORMAL, SPORT S, SPORT S+, COMFORT) AND CUSTOMISE, ADAPTIVE VARIABLE SUSPENSION (AVS), YOU'RE GUARANTEED TO ACHIEVE SUPERIOR PERFORMANCE IN A MULTITUDE OF OFF-ROAD ENVIRONMENTS.

BY AUTOMATICALLY AND ELECTRONICALLY CONTROLLING THE FRONT AND REAR STABILISERS INDEPENDENTLY, THE SYSTEM CAN MAKE PRECISE ADJUSTMENTS TO EACH OF THE FOUR WHEELS AS THEY RESPOND INDIVIDUALLY TO THE CONDITIONS. THE LAND CRUISER GR SPORT IS ALSO EQUIPPED WITH A SIGNIFICANTLY LENGTHENED SUSPENSION STROKE AND EXCELLENT WHEEL ARTICULATION.

ADDING TO THE EXPANSIVE SUITE OF OFF-ROADING ORIENTED TECHNOLOGY, IS DOWNHILL ASSIST CONTROL (DAC), HILL-START ASSIST CONTROL (HAC), AND CRAWL CONTROL, PROVIDING CONSISTENT SUPPORT WHICHEVER WAY YOU'RE FACING.



# **WHAT'S DIFFERENT IN THE LAND CRUISER GR SPORT**

CROWNED WITH GR SPORT LOGOS, THE DRIVER AND FRONT PASSENGER ARE TREATED TO GENUINE LEATHER ACCENTS WITH DOUBLE STITCHING, INDIVIDUALLY CONTROLLED HEATING AND VENTILATION AS WELL AS POWER CONTROL AND ADJUSTMENT. THE REAR OUTER SEATS FEATURE GENUINE LEATHER ACCENTS, DOUBLE STITCHING AS WELL AS HEATING AND VENTILATION.



## GR SPORT STEERING WHEEL & KEY PLATE

Throughout the cabin you'll find links to the spirit Toyota's motorsport legacy like a carbon look GR Sport steering wheel and a GR Sport logo adorned key plate.



---

### RACE BRED DESIGN

Everywhere you look the Land Cruiser GR Sport is a winner. Taking cues from the world of motorsport, of legendary desert races and rally stages you'll find spartan finishes and carbon fibre look trim.

---

### SUSPENSION

The new Land Cruiser GR Sport features optimised spring constants and AVS for outstanding steering stability. It is also equipped with a significantly lengthened suspension stroke and the longest wheel articulation of any generation in the series.

---

### ELECTRONIC DIFFERENTIAL LOCK (FRONT)

The Land Cruiser GR Sport is equipped with both front and rear electronic differential locks, contributing to improved performance in a variety of off-road environments.



# PHENOM UNLEASHED

TO SAY THAT THE LAND CRUISER IS  
POWERFUL WOULD BE AN  
UNDERSTATEMENT. NO SYNONYM OF  
POWER WOULD DO JUSTICE TO THE  
STORM OF BLISTERING  
PERFORMANCE GENERATED BY THE  
LAND CRUISER.



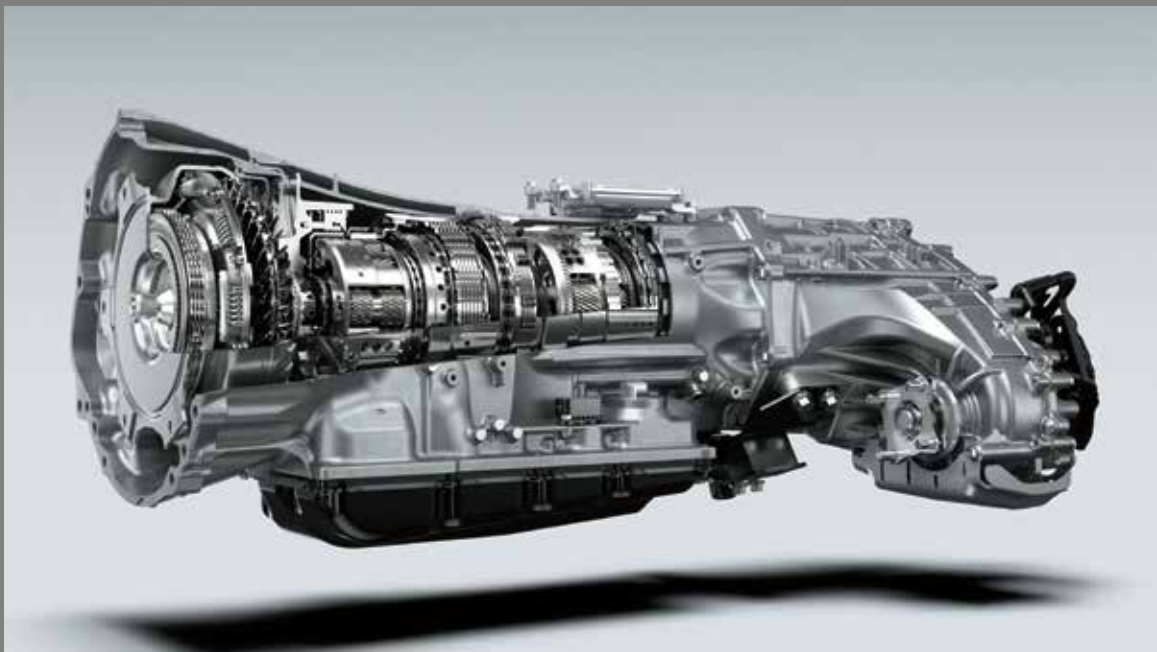
## **NO HOLDS BARRED**

The Land Cruiser is a powerhouse unlike any other. Armed with a raging 3.3 litre diesel engine that's seamlessly mated with a 10 N Speed Automatic Transmission, delivers a hefty 227kW of power and 700Nm of torque. It can conquer the unimaginable, the impossible.



## **POWERFUL 0.00335m<sup>3</sup> (3.3 L) V6 DIESEL ENGINE**

Ravage through even the most impossible terrain



## **10 N SPEED AUTOMATIC TRANSMISSION**

Takes you where nobody has tread before with ease



# UNCOMPROMISING UNAPOLOGETIC

THE LAND CRUISER IS AN  
UNCOMPROMISING CAVALIER. IT  
LIVES ON LAND, THRIVES IN WATER  
AND EXULTS THE PEAKS. EVEN IF IT IS  
EMBELLISHED WITH INDULGENCE  
AND OPULENCE.



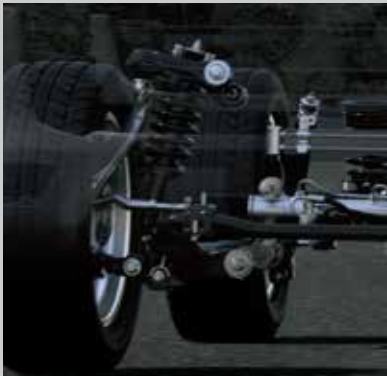


## GRAVITY REDEFINED

Gravity defying abilities turning rough terrains into red carpet drives.  
The All New Land Cruiser is undoubtedly the versatile SUV of all time.



## AWD INTEGRATED MANAGEMENT (AIM)



What seems impossible for others, The Land Cruiser finds it easy. Whether it's tougher road conditions or extreme weather, It always forecasts a drive to remember. benchmark for others to achieve.

Legacy for a Land Cruiser comes naturally. Class-leading dynamic performance makes you incredible with hardcore capabilities.

Broadly two kinds of four wheelers roam the world. One The Land Cruiser, Two All the rest. No matter the road conditions, the Land Cruiser always sets a benchmark for others to achieve.

## MULTI-TERRAIN MONITOR

Leaders may come and go. But owning a Land Cruiser makes you invincible.

Assists the driver by checking the periphery while off-roading and parking.



When you drive a Land Cruiser, you're already on top of any league. A class apart in every sense. Excellent ride comfort and handling stability along with exceptional off-road performance.



Overwhelming drivability and controllability on off-road, Excellent ride comfort on-road.



# CITADEL OF SAFETY

WHILE THE LAND CRUISER IS A BEAST OF A PERFORMER, IT'S EQUALLY HIGH ON SAFETY TOO. THAT'S WHY YOU CAN BE SURE THAT YOU CAN NOT ONLY TRED THE FOUR CORNERS OF THE WORLD BUT RETURN BACK IN ONE PIECE. THE SRS AIRBAGS IN THE LAND CRUISER MAKES IT A FORTNESS OF SAFETY YOU CAN RELY ON, NO MATTER WHERE YOU ARE.



## TOYOTA SAFETY SENSE™ 3.0

The new Land Cruiser has adopted the latest Toyota Safety Sense™ 3.0

- PCS (Pre-Collision System) that helps avoid a collision or reduce damage
- LTA (Lane Tracing Assist) for enhanced lane-keeping
- LDA (Lane Departure Alert) for alert the driver and gentle corrective steering to keep in the lane
- DRCC (Dynamic Radar Cruise Control) with full-speed range with increased convenience
- AHS (Adaptive High-Beam System & AHB (Automatic High Beam) for Automated High/Low beam operations and Allows enhancing nighttime visibility.





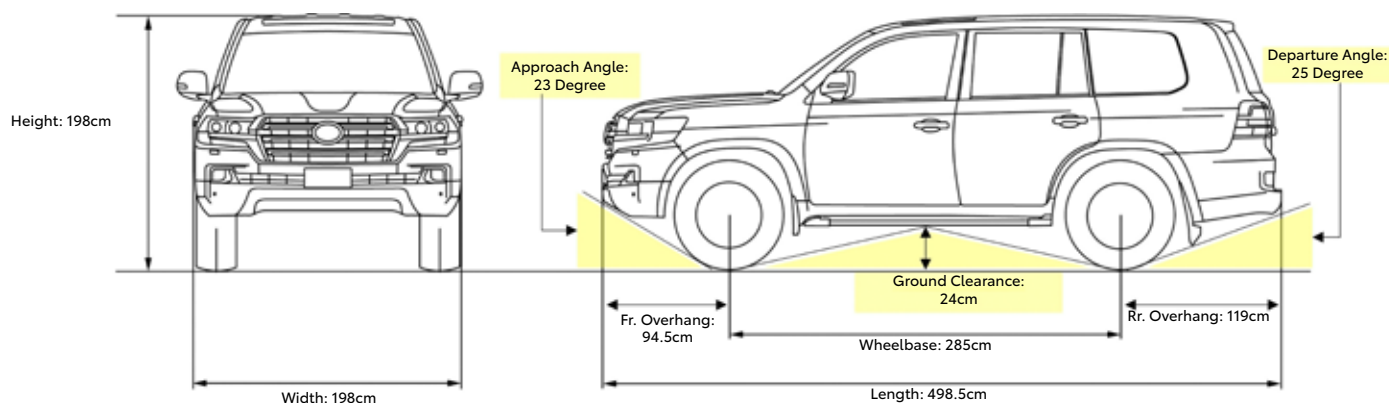
# COLOURS THAT REFLECT CHARACTER

THE COLOURS OF THE LAND  
CRUISER ARE NOT JUST A FEW  
SHADES PUT TOGETHER. IT'S  
CAREFULLY CURATED TO REFLECT  
THE INDOMITABLE CHARACTER  
AND UNTAMED INDIVIDUALITY  
OF THE LAND CRUISER.

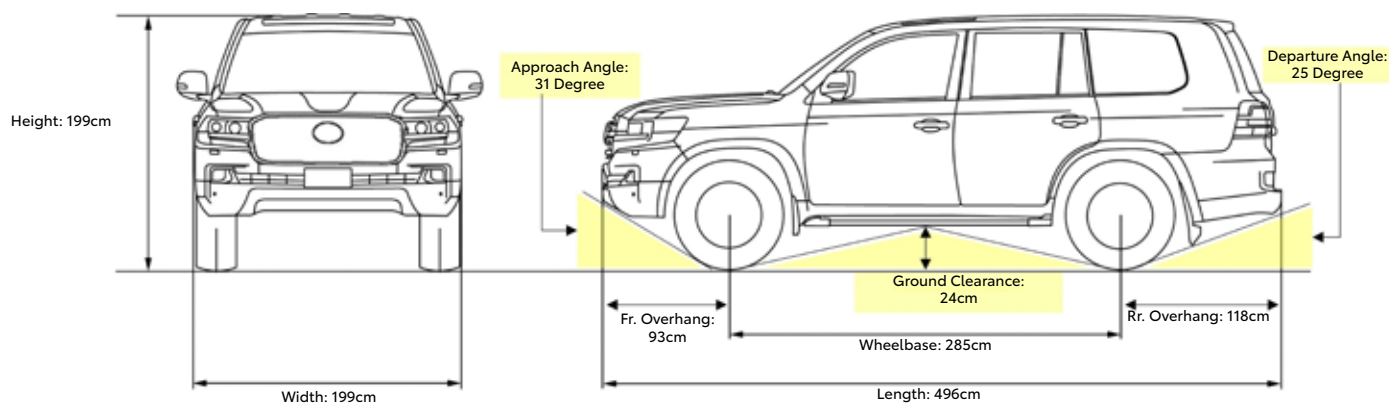


# DIMENSIONS

## ZX



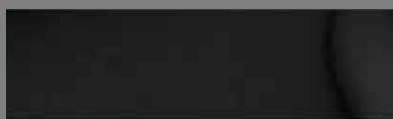
## GR SPORT



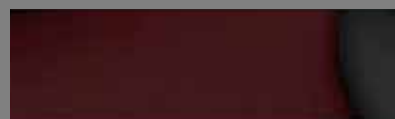
# INTERIOR COLOURS



NEUTRAL BEIGE  
(APPLICABLE FOR ZX ONLY)



BLACK  
(APPLICABLE FOR ZX & GRS)



BLACK & DARK RED  
(APPLICABLE ONLY FOR GRS)

# EXTERIOR COLOURS



090 – PRECIOUS WHITE PEARL  
(APPLICABLE FOR ZX & GRS)



218 – ATTITUDE BLACK  
(APPLICABLE FOR ZX & GRS)

Note: Vehicles pictured and specifications detailed in this brochure may vary between models and equipment. Addition of extra features may change figures in this chart. Toyota Kirloskar Motor Pvt. Ltd. reserves the right to alter the details of specifications and equipment without a notice. Actual colour of the vehicle body & upholstery might differ slightly from the images depicted in this brochure. Features are grade specific.

LANDCRUISER 300 MODEL SPECIFICATIONS	ZX Grade	GRS Grade
ENGINE		
Type	V6 0.00335m³ Turbo Diesel Engine (3.3 Litre)	
No. of Cylinders	6 N	
Displacement	0.00335m³ (3.346 L)	
Max. Output	227kW@ 66.6 s <sup>-1</sup> (4000 rpm)	
Max. Torque	700 Nm@ 26.6~43.3 s <sup>-1</sup> (1600 – 2600 rpm)	
TRANSMISSION		
Type	10N – Speed Automatic Transmission with Manual Shift mode	
Number of Ratios	10 N	
Driveline	AWD	
CHASSIS		
Suspension	Front: Double Wishbone Independent; Rear: 4N – Link Rigid	New Stability Control for off-road capabilities [Sporty Usage & Enhanced Stability]
	Pitch & Bounce Control	
Tyres & Wheels:	265/55R20 Alloys (50.8 cm)	265/65R18 Alloys (45.72 cm)
STEERING		
Steering Gear Type	Rack & Pinion	
Power Steering System	Integral	
DIMENSION & WEIGHT		
Length	498.5 cm	496 cm
Width	198 cm	199 cm
Height	198 cm	199 cm
Wheelbase	285 cm	285 cm
Min. Ground Clearance	24 cm	
Min. Turning Radius	590 cm	
Fuel Tank Capacity	110 Litres (0.10 m³)	
Seating Capacity	5 N	
EXTERIOR FEATURES		
Headlamps	LED Headlamps with auto-levelling and Headlamp washers	
Rear Combi Lamp	LED	
Turn Indicators [Front & Rear]	Sequential	
Fog Lamps [Front & Rear]	LED	
Outside Rear View Mirror:	Powered, Heated, Anti Glare, Chrome Plated with Puddle Lamps	Powered, Heated, Anti Glare, & Puddle Lamps
Side steps	Illuminated side steps	Premium Side Steps
Grille	Premium Grille	Unique front and rear lower bumper design and black wheel arch mouldings
Door mouldings	Chrome window mouldings, Painted lower door mouldings	Black lower door mouldings, outer mirror covers, door handles, window mouldings and LandCruiser logo
GR Sport Badge	-	On grille, front doors & Back Door
Sunroof	Sunroof with Jam Protection	
Roof Rails	With Roof Rails	
Body Coat	Premium Body Coating with Rich Gloss	
COMFORT & CONVENIENCE		
Upholstery	Smooth Leather Upholstery	
Seat Ventilation & Heating	Front & Rear	
Cool Box	Cool Box (Large)	
Parking Brake	Electronic Parking Brake	
Rear Seat	40:20:40 Split Rear Seat with recline	
Drive Modes	5N Drive Mode + Customize	
Defogger [Front + Rear]	Defogger [Front + Rear]	
Headrest	Individual Adjustable Headrests	
Cup holder	Convertible Rear Armrest with cup holder	
Smart Entry System	Smart entry system with start/stop button	
Power Steering	Hydraulic Power Steering [E-Tilt+Telescopic]	
Front Seats	8N Way Power Adjustable Front Seats [Lumbar support for Driver Seat]	
Head Up Display	With Head Up Display	
Wireless Charger	Wireless Charger for Front Seats	
Interior Rear View Mirror	Interior Rear View Mirror with Auto-Dimming Function	
Power Back Door	Power Back Door with Kick Sensor	Power Back door



INTERIOR FEATURES		
Door Courtesy Lamp	With LED Door Courtesy Lamp	
Air Conditioning System	4N Zone Automatic Air Conditioning System	
Windshield and Window glass	Green Laminated Acoustic Glass with Heat Shield	
Lighting	Illuminated Entry System	
Audio System	31.24 cm Display Audio System	
Number of Speakers	14N Speakers	
Audio System connectivity	Compatible with Apple Car Play™ & Android Auto™	
Rear Seat Entertainment	Rear Seat Entertainment [Head Rest Mounted 2N]	
Gear shift knob	Leather Accented Gear Shift Knob	
GR Sport logo	-	GR Logo on Steering Wheel and Smart Start Engine Button
OFF - ROAD CAPABILITIES		
Suspension	Adaptive Variable Suspension	
Differential	Rear torque-sensing Limited Slip Differential	Differential with Front and rear differential locks
Features	Crawl Control	
	Downhill Assist Control	
	Hill-start Assist Control	
	Multi-Terrain Select	
	4N-camera Multi-Terrain Monitor with Panoramic View Monitor	
	Vehicle Dynamics Integrated Management	
	Active Traction Control	
SAFETY & SECURITY		
ADAS or Toyota Safety Sense ™	Toyota Safety Sense TM 3.0 with Pre-Collision System (PCS) Lane Departure Alert (LDA) Dynamic Radar Cruise Control (DRCC) Lane Tracing Assist (LTA) Adaptive High-beam System (AHS)	
Anti Theft System	Anti Theft System [Immobilizer+Siren+Intrude+Slant]	
Seat Belt	3N Point ELR Seat Belt [Pre-Tensioner+Load Limiter+Reminder]	
Child Restraint System	2 N	
SRS Airbag	10N SRS Airbags	
Panoramic View Monitor	360 Deg Panoramic View Monitor	
Disc Brakes	Front & Rear	
Vehicle Stability Control	Vehicle Stability Control [Multi Terrain System]	
Auto Door Lock	Speed Sensing Door Lock	
Auto door Unlock	Impact Sensing Door Unlock	
Power window	One touch Power window with Jam Protector & Remote	
Warning System	Warning System [Speed, Door Ajar, Seat Belt, Light Remind, Key Remind, Tyre Pressure]	
Parking Sensors	Front & Rear	
Safety Features	Anti Skid Brake System	
	Vehicle Dynamic Management	
	Brake Assist	
	Crawl Control with Turn Assist	
	Downhill Assist Control	
	Blind Spot Monitor (BSM)	
	Tire Pressure Warning System	
TOYOTA CONNECTED SERVICES		
	Toyota Connected Services	
	Toyota i-Connect app	
	Remote Air conditioner Package	
	Stolen Vehicle Tracking	
	Automatic Collision Notification	
	SOS Emergency Call	

Disclaimers:  
 Avoid using the phone while driving for your safety. Apple CarPlay® is a registered trademark of Apple Inc. Android Auto™ is a registered trademark of Google Inc.  
 JBL™ is a trademark of Harman International Industries, Inc. Bluetooth is a registered trademark of Bluetooth SIG.  
 For more details on the functioning of SRS airbags, please refer to the owner's manual.  
 Toyota Safety Sense™ (TSS) is a registered trademark of Toyota Motor Corporation. The driver is always responsible for paying attention to the vehicle surroundings & driving safely as there are limitations to a degree of recognition & controlling performance that the Toyota Safety Sense™ system can provide.